

Rail Tie Wind Project Albany County, Wyoming

Emergency Response Plan

Revision No. 0

January 2021

Prepared for:
ConnectGen Albany County LLC

Prepared by:



Tetra Tech, Inc.
350 Indiana St., Ste. 500, Golden, CO 80401

TABLE OF CONTENTS

1	INTRODUCTION.....	1
1.1	Objective.....	1
1.2	Health and Safety Measures.....	1
1.3	Plan Review and Revision	2
2	PROJECT OVERVIEW	4
2.1	Facility Description.....	4
2.2	Project Schedule and Workforce.....	4
3	EMERGENCY RESPONSE SERVICES IN THE PROJECT AREA.....	8
3.1	Law Enforcement.....	8
3.2	Fire Services.....	8
3.2.1	Albany County Fire District #1	8
3.3	Emergency Medical Services.....	11
3.3.1	Laramie Fire Department.....	11
3.3.2	Iverson Memorial Hospital	11
3.4	Other Emergency Response Support.....	12
3.4.1	Police, Fire, and Emergency Service Departments.....	12
3.4.2	Hospitals and Health Clinics.....	12
3.4.3	Wyoming Regional Emergency Response Team.....	12
3.4.4	Albany County Emergency Management Coordinator	13
4	EMERGENCY RESPONSE MANAGEMENT	14
4.1	Primary Emergency Response Team.....	14
4.2	Communications	15
4.2.1	Signage.....	15
4.2.2	Project Radio, Landline Telephones, and Cell Phones	15
4.2.3	Helicopter Transportation	16
4.3	On-Site Emergency Response Requirements.....	16
4.3.1	Staffing.....	16
4.3.2	Equipment.....	16
4.3.3	Training	17
4.4	Emergency Evacuation	18
4.4.1	Emergency Routes.....	19
4.4.2	Evacuation Procedures	19
5	EMERGENCY SCENARIOS	20
5.1	General Emergency Response Protocol	20
5.2	Fire/Explosion	20
5.2.1	Electrical Fire	21
5.2.2	Wildfire	21
5.3	Medical Emergency	25
5.4	Chemical Release.....	25
5.5	Security Threats.....	26
5.5.1	Sabotage.....	26

5.5.2	Bomb Threat	27
5.5.3	Chemical and Biological Threat	27
5.6	Severe Weather	27
5.6.1	Thunderstorms and Lightning	28
5.6.2	Tornadoes	28
5.7	Pandemic / Infectious Illness	28
5.8	Tower Rescue	29
6	LITERATURE CITED	30

LIST OF TABLES

Table 1:	ERP Revisions	3
Table 2:	Project Construction Schedule	5
Table 3:	Primary Emergency Response Team Members	14
Table 4:	Proposed Wildfire Mitigation Measures for the Rail Tie Wind Project.....	23

LIST OF FIGURES

Figure 1:	Project Vicinity Map.....	6
Figure 2:	Preliminary Project Site Plan.....	7
Figure 3:	Emergency Services	9

LIST OF ATTACHMENTS

- Attachment 1: Directions to Emergency Response Services
- Attachment 2: Evacuation Routes and Designated Sites
- Attachment 3: Emergency Response Forms and Checklists

ACRONYMS AND ABBREVIATIONS

ACFD #1	Albany County Fire District #1
BLM	Bureau of Land Management
CFR	Code of Federal Regulations
ConnectGen	ConnectGen Albany County LLC
EMS	Emergency Medical Services
EMT	Emergency Medical Technician
ERP	Emergency Response Plan
LARC	Laramie/Albany County Records and Communications
MW	Megawatt
O&M	Operations and Maintenance
Project	Rail Tie Wind Project
VFD	Volunteer Fire Department

1 INTRODUCTION

1.1 Objective

ConnectGen Albany County LLC (ConnectGen) has prepared this Emergency Response Plan (ERP) to outline the response to emergencies that might arise during the construction, operations and maintenance (O&M), and decommissioning of the proposed Rail Tie Wind Project (Project) in Albany County, Wyoming. The purpose of the ERP is to evaluate potential risks and emergencies; detail the roles and responsibilities for employees, contractors, vendors, and regional emergency service providers; and detail response protocols developed in consultation with local authorities prior to Project construction. The ERP was prepared in accordance with Chapter 5, Section 12, H.3 (b) of the Albany County Wind Energy and Solar Energy Siting Regulations (Regulations; Albany County 2020b). Albany County is currently considering proposed ordinance revisions to the current Regulations, which are anticipated to be formally adopted in March 2021. The information provided in this ERP has been developed to comply with both the existing Regulations and proposed ordinance revisions.

1.2 Health and Safety Measures

Because the safety of employees, contractors and the general public is of primary concern, the ConnectGen Site Manager and each member of the ConnectGen staff are committed to providing a safe, healthy work environment and are responsible for ensuring implementation of these procedures. All site personnel, regardless of job responsibilities, will receive a Project orientation describing environmental, health and safety Project procedures, requirements, and site rules. This document will form part of the site safety induction for all site personnel.

This ERP addresses Occupational Safety and Health Act requirements for emergency response management and plans (29 Code of Federal Regulations [CFR] 1910.38 and 1910.120). A Spill Prevention, Control, and Countermeasure Plan will be prepared under separate cover that will address the prevention and spill response requirements for oil and other harmful pollutants as specified in 40 CFR part 112.

Employees will be trained in the proper response and actions to be taken in the event of an explosion, fire, chemical release, severe weather (major lightning storms or tornadoes), or medical emergency. Employees will be trained to notify the proper personnel or emergency service provider, assist in controlling the situation (if safe to do so), and proceed to a designated muster point until the situation is under control. Employees responsible for documenting an emergency situation will be trained in the proper reporting procedures in compliance with county, state, and federal regulations.

A copy of this ERP will be located onsite in the O&M building in plain view. An overall map of the site showing where emergency response equipment will be stored for the duration of

construction will be developed after meetings and input from emergency providers and contractors. This map will include muster points for emergency situations and will be submitted to emergency responders prior to construction mobilization. This map will also show the location(s) of gated/locked entrances. The local emergency services will be invited to visit and make their own assessment of the site and to suggest any improvements and additions to this ERP.

1.3 Plan Review and Revision

This ERP will be updated periodically as the Project construction, O&M, decommissioning activities evolve. This version of the ERP has been developed based on current pre-construction information and will be updated once a Construction Contractor has been selected and final engineering is complete. This preliminary ERP does not yet incorporate information from the Construction Contractor's safety plans.

Each new revision to the ERP will be distributed to all required personnel for review and approval. The ERP will be allocated a new revision number each time a change is made to the document. The revision number will be noted on the cover of this ERP and in the footer of each page. When a new revision of the document is available, a notification email will be distributed to all personnel by the Construction or Operations Site Manager advising of the update, depending on the Project phase. The Construction or Operations Site Manager is responsible for the implementation and review of the ERP. All revisions made during plan review of the ERP will be logged in Table 1.

Table 1: ERP Revisions

Revision No.	Date of Revision	Reviewer	Description of the Revision

2 PROJECT OVERVIEW

2.1 Facility Description

The Project is a utility-scale Wind Energy Conversion System located in southeastern Albany County, Wyoming, and encompasses approximately 26,000 acres of ranchland on private and Wyoming State Lands near Tie Siding, Wyoming (Project Area; Figure 1). The proposed Project layout includes 120 wind turbine generators, each approximately 4.2 megawatts (MW) in size, for a maximum nameplate capacity of 504 MW. The Project proposes to interconnect to the existing transmission system of the Western Area Power Administration via the Ault-Craig 345-kilovolt transmission line that runs through the Project Area.

The operation of the Project will include the following components:

- Approximately 120 wind turbines and related equipment
- Up to 52 miles of new permanent access roads
- Up to 73 miles of underground electrical collection and communication lines
- Supervisory Control and Data Acquisition system (installed with the collector lines)
- A single O&M facility
- Two Project substation facilities
- An interconnect switchyard
- Approximately 4.4 miles of overhead generation-tie lines
- Up to three permanent meteorological towers

Construction of the Project would also require temporary access roads, crane paths, and two construction laydown yards, each with a concrete batch plant with the capacity to produce up to 1,500 cubic yards of concrete daily. A Project Site Plan is included as Figure 2. The Project Site Plan is representative of the Project layout but remains preliminary because Project final engineering and micro-siting has not yet been completed. Final turbine numbers, layout, configuration, and turbine type are subject to change based on turbine availability, final engineering, and other economic and environmental considerations. A final Site Plan will be provided to the County Planning Office at least 90 days prior to commencement of Project operations.

2.2 Project Schedule and Workforce

For construction planning and site optimization, the Project consists of two separate construction stages, each approximately 252 MW. Construction activities are scheduled to begin in 2022, and will require 2 years to fully construct. It is anticipated that the first 252 MW stage would be completed and fully operational by the end of 2022, and the second stage operational in 2023. Construction of the Project is anticipated to take 20 months, during which time the

average monthly workforce would number 120 workers. Operation of the Project is expected to provide direct employment for 23 workers, all of whom would likely reside in Albany County.

A schedule for construction sequencing of primary project components is indicated in Table 2 below.

Table 2: Project Construction Schedule

Project Component	Jan	Feb	Mar	Apr	May	Jun	Jul	Aug	Sep	Oct	Nov	Dec
2022												
Roads												
Crane Pads												
Foundations												
Collection												
WTG erection												
WTG commissioning												
Substation												
Overhead Line												
Restoration												
2023												
Roads												
Crane Pads												
Foundations												
Collection												
WTG erection												
WTG commissioning												
Substation												
Overhead Line												
Restoration												

WTG = Wind Turbine Generator

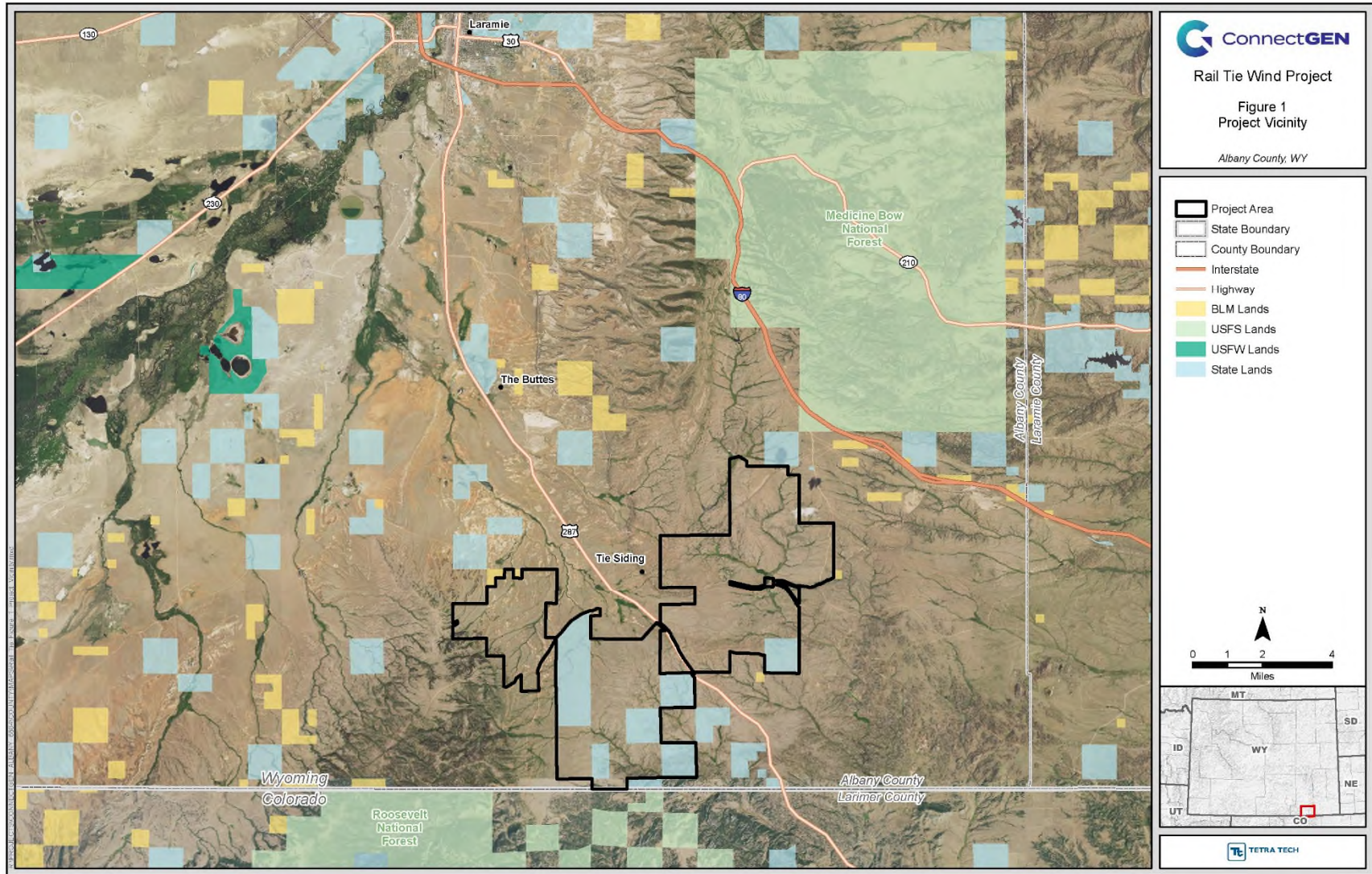


Figure 1: Project Vicinity Map

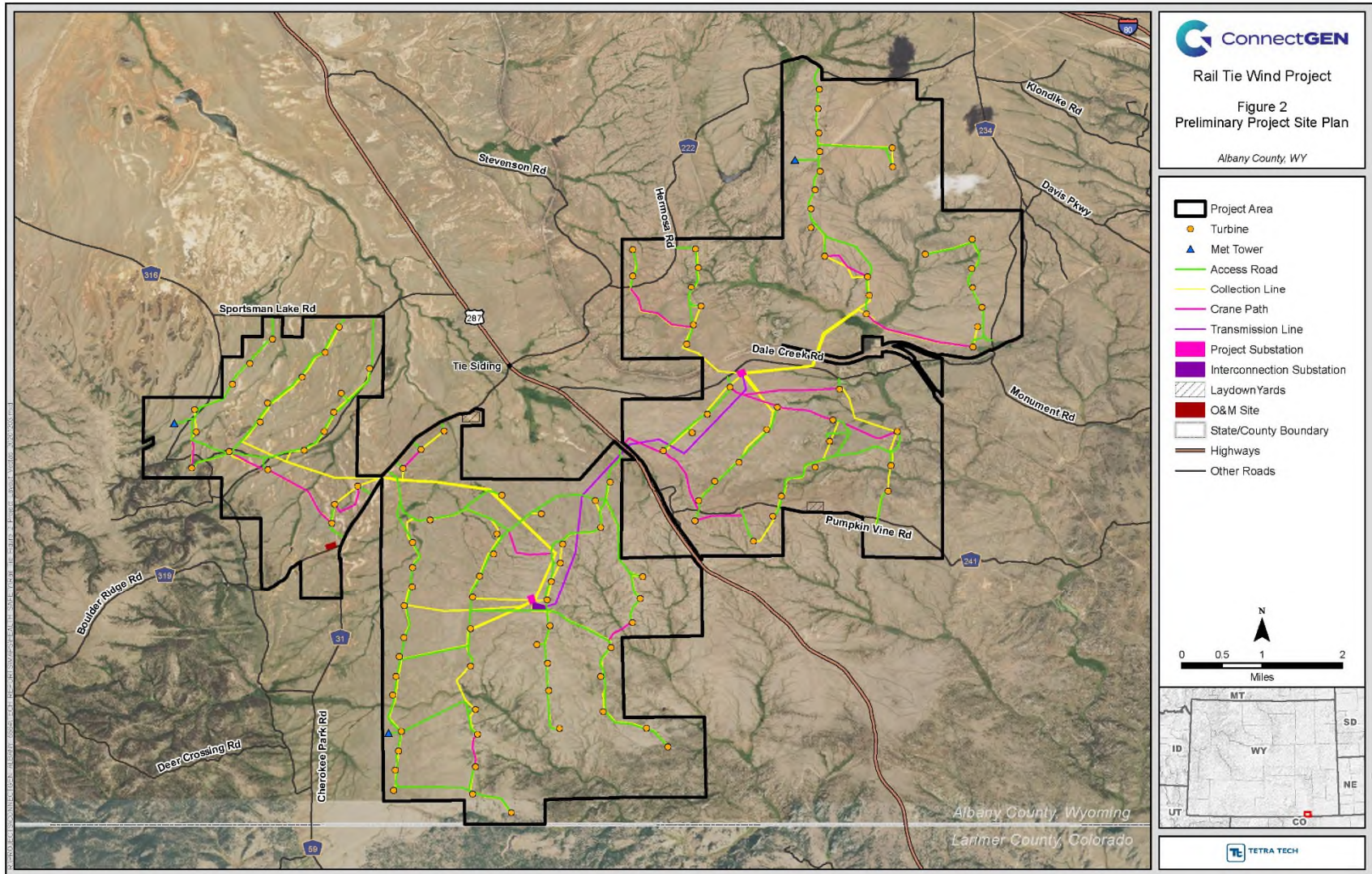


Figure 2: Preliminary Project Site Plan

3 EMERGENCY RESPONSE SERVICES IN THE PROJECT AREA

This section summarizes the local and regional emergency response service providers and describes their roles and responsibilities and available resources. Figure 3 shows locations of emergency response service providers in relation to the Project Area. More detailed directions to the emergency response service providers identified in Figure 3 can be found in Attachment 1.

3.1 Law Enforcement

Law enforcement services in this portion of the County are provided by the Albany County Sheriff's Office and the Laramie Police Department. These agencies will serve as primary emergency response providers for the Project. The Albany County Sheriff's Office comprises 44 sworn law enforcement officers (FBI 2020). The Laramie Police Department provides law enforcement services for the City of Laramie. The Laramie Police Department has 46 sworn law enforcement officers (FBI 2020). The Wyoming Highway Patrol will also have responsibility for law enforcement along U.S. Highway 287, which bisects the Project (Figure 1).

3.2 Fire Services

3.2.1 Albany County Fire District #1

The Project Area is serviced by the Tie Siding Volunteer Fire Department (VFD), Vedauwoo VFD, and Central VFD within Albany County Fire District #1 (ACFD #1), which encompasses the Project Area (Albany County 2020a, ACFD 2020). These three volunteer fire departments, along with several other VFDs, work cooperatively throughout Albany County and will serve as primary emergency response providers for the Project.

3.2.1.1 Tie Siding Volunteer Fire Department

The Tie Siding VFD is the closest fire responder and is located approximately 3.3 miles (driving distance) from the Project Area. The Tie Siding VFD covers a 220-square-mile service area with a population of approximately 400. The department operates one fire station staffed by 11 unpaid volunteer firefighters (Wyoming Department of Fire Prevention and Electrical Safety 2018).

3.2.1.2 Vedauwoo Volunteer Fire Department

The Vedauwoo VFD is located approximately 2.6 miles (driving distance) from the Project Area. The Vedauwoo VFD covers a 189-square-mile service area and serves a population of approximately 500. The department operates one fire station, staffed by seven unpaid volunteer firefighters (Wyoming Department of Fire Prevention and Electrical Safety 2018).

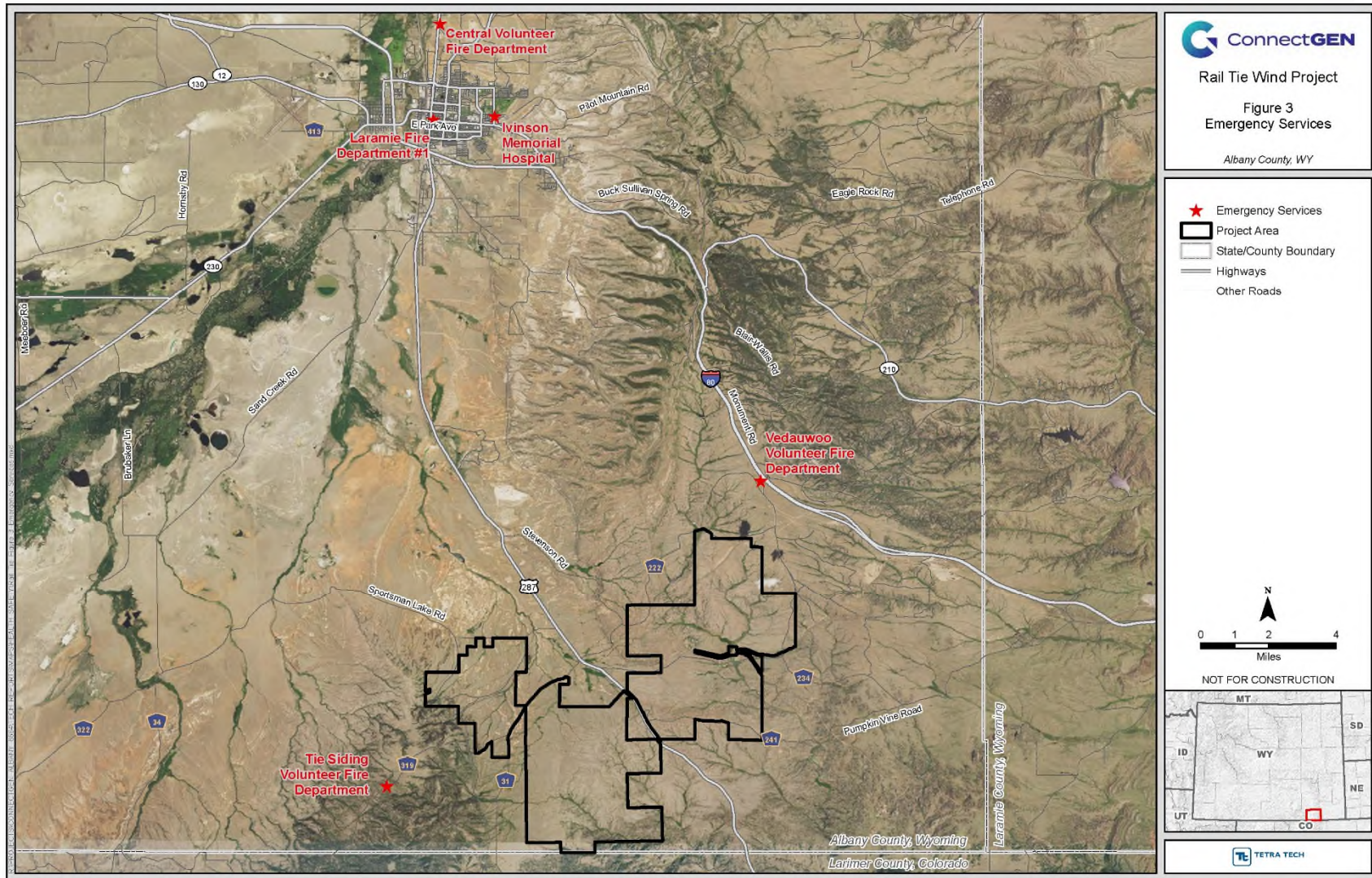


Figure 3: Emergency Services

3.2.1.3 Central Volunteer Fire Department

The Central VFD is located approximately 24.6 miles (driving distance) from the Project Area and may provide support to the Tie Siding and Vedauwoo VFDs. The Central VFD covers a 792-square-mile service area and serves a population of approximately 3,400. The department operates 1 fire station, staffed by 16 unpaid volunteer firefighters, and 4 emergency medical technicians (EMTs; Wyoming Department of Fire Prevention and Electrical Safety 2018).

3.2.1.4 Laramie/Albany County Records and Communications Center

The Laramie/Albany County Records and Communications (LARC) Center is the division of the Laramie Police Department that provides emergency 9-1-1 dispatching and consolidated records services for all Albany County residents. Primarily, the LARC Dispatch Center serves the Laramie Police Department, Albany County Sheriff's Office, and the Laramie Fire Department and dispatches for Rock River Fire Department and Albany County Fire District #1, which includes Big Laramie Valley VFD, Centennial Valley VFD, Little Laramie Valley VFD, Tie Siding VFD, Vedauwoo VFD, and the Central VFD. Additional dispatching services are provided to the Albany County Fire Warden for the Garrett, Laramie Peak, and Sybille fire zones.

The LARC Dispatch Unit receives more than 12,000 9-1-1 calls annually and 15,000 non-emergency calls monthly. The 9-1-1 system allows dispatchers to accurately locate wireline callers and receive callback information and location information. Additionally, the LARC Dispatch Center routes statically located Voice over Internet Protocol calls directly through the 9-1-1 system. The call center equipment meets the NENA i3 standard and is compatible with upcoming "Next Generation" 9-1-1 systems.

3.2.1.5 Interagency Dispatch Centers

Wildland fire services for the Project Area will be dispatched from the Rawlins Interagency Dispatch Center and the Casper Interagency Dispatch Center (NICC 2013). The principle mission of the interagency dispatch centers is to provide safe, cost-effective, and timely response of resources for appropriate management response to wildland fires and other emergency management activities within the appropriate service area.

The Rawlins Interagency Dispatch Center, a division of the Bureau of Land Management's (BLM's) High Desert District, dispatches wildfire services to six counties in southern Wyoming (including Albany County) on behalf of the counties, four BLM Field Offices, the State of Wyoming, Wyoming State Forestry, the National Park Service, and the U.S. Fish and Wildlife Service (Rawlins Interagency Dispatch Center 2020a, 2020b). The Casper Interagency Dispatch Center's coordination efforts are in cooperation with the BLM's High Plains and High Desert District, U.S. Forest Service (Medicine Bow/Routt National Forests and Thunder Basin National Grasslands), National Park Service (Fort Laramie National Historic Site), Wyoming

State Forestry Division (Districts 1,2,3,4,5), and 17 counties (including Albany County). The Wyoming State Forestry Division is responsible for fire suppression on Wyoming State Land. Local fire districts and departments provide fire prevention and suppression activities on private lands and may assist with fires on federal or state lands as requested by the applicable land management agency. County-level fire districts have mutual aid agreements in place with one another as well as with local fire departments. These mutual aid agreements allow for the sharing of personnel, equipment, and resources as needed.

3.3 Emergency Medical Services

3.3.1 Laramie Fire Department

Emergency medical services (EMS) for Albany County are provided by the Laramie Fire Department (Laramie Wyoming 2020a). In addition to serving the City of Laramie, the Laramie Fire Department, through a mutual aid agreement with the ACFD #1, also serves the southern part of the County and will likely be the first responder along major travel routes from Laramie to the Project Area. The Laramie Fire Department is responsible for providing EMS to all of Albany County and will be the principal responder to medical emergencies in the Project Area.

The Laramie Fire Department is located approximately 21.9 miles north of the Project Area (driving distance). The Laramie Fire Department serves a population of approximately 32,000 people and operates 3 fire stations, staffed by 48 full-time firefighters. EMS staff include 6 basic EMTs, 36 advanced EMTs, and 6 paramedics (Wyoming Department of Fire Prevention and Electrical Safety 2018). The Laramie Fire Department also responds to all natural disaster and hazardous material incidents within the regional response area encompassing Albany County and maintains specialized response trailers that carry most necessary equipment for a hazardous material incident (Laramie Wyoming 2020b).

3.3.2 Ivinson Memorial Hospital

The closest hospital to the Project is Ivinson Memorial Hospital in Laramie. The hospital is a State-Certified Area Trauma Hospital and has 24-hour in-house physicians covering medical, surgical, and extended care units (Ivinson Memorial Hospital 2020). Ivinson Memorial Hospital is located approximately 23.9 miles (driving distance) from the Project Area. Ivinson Memorial Hospital has 506 total employees and 99 licensed hospital beds and offers 24-hour emergency room services, 7 days a week (Ivinson Memorial Hospital 2020).

3.4 Other Emergency Response Support

ConnectGen will meet with and provide copies of the ERP to other emergency response service providers in the region as requested by the County or other emergency response providers. ConnectGen does not anticipate that additional emergency response service providers will need to respond to an emergency at the Project Area; however, given the possibility that one may occur, these additional agencies can be kept up-to-date on the Project and ERP if requested.

3.4.1 Police, Fire, and Emergency Service Departments

Additional law enforcement services in the vicinity of the Project Area include the following organizations:

- Laramie County Sheriff's Department
- City of Cheyenne Police Department

Additional fire protection services in the vicinity of the Project Area include the following organizations:

- Laramie County Fire Department
- Cheyenne Fire and Rescue
- Big Laramie Valley Volunteer Fire Department
- Crystal Lakes Fire Department in Colorado
- Red Feather Lakes Volunteer Fire Department in Colorado

3.4.2 Hospitals and Health Clinics

Additional health services in the vicinity of the Project Area include the following organizations:

- Cheyenne Regional Medical Center—West Campus

3.4.3 Wyoming Regional Emergency Response Team

The Wyoming Emergency Response Act (Wyoming Statutes 35-9-151) established eight Regional Emergency Response Teams under the authority of the Wyoming Office of Homeland Security. Albany County is located within Region 3 and responsibility for this region rests with the City of Laramie Fire Department (Wyoming Homeland Security 2020; Laramie Wyoming 2020b). The Laramie Fire Department operates at a Hazmat Technician level out of a mobile command station. The Laramie Fire Department also maintains specialized response trailers that carry most of the equipment necessary to respond to a hazardous material incident.

3.4.4 Albany County Emergency Management Coordinator

The Albany County Emergency Management Office is coordinated by the Laramie Fire Department and is responsible for responding to natural disasters and hazardous materials spills and for implementing the County's Hazard Mitigation Plan. It is not anticipated that construction, O&M, or decommissioning of the Project will interfere with the County's Hazard Mitigation Plan or subject emergency response personnel to an above-normal response request or outside of the normal operational response area. The Albany County Emergency Management Office is a participating agency in the development of this ERP.

4 EMERGENCY RESPONSE MANAGEMENT

4.1 Primary Emergency Response Team

The primary emergency response team identifies the primary onsite and local emergency response service providers, including contact information. In the event of an emergency at the Project, specific site personnel will assume leadership roles for the emergency response.

Table 3 provides the names and contact information of the current ERP primary emergency response team members and providers.

Primary emergency response team information will be inserted in Table 3 prior to construction and updated as needed throughout the life of the Project.

Table 3: Primary Emergency Response Team Members

Agency/Corporation	Name/Role	Phone/Email	Address
On-Site Emergency Response Team			
Construction Site Manager			
Construction Contractor's Safety Coordinator			
Operations Site Manager			
Lead Wind Technician			
Local Emergency Response Providers			
Albany County Emergency Management Office	Blake Halsey Emergency Management Coordinator	307-721-1815 ema@co.albany.wy.us	525 Grand Ave. Suite 304 Laramie, WY 82070
Albany County Sheriff's Department	Aaron Appelhans County Sheriff	307-755-3525	525 E Grand Ave. Ste. 101 Laramie, WY 82070
Laramie Police Department	Dale Stalder Police Chief	307-721-3547	620 Plaza Ct. Laramie, WY 82070
Wyoming Highway Patrol	Lt. Mike Simmons District 1, Division J (Laramie) Supervisor	307-745-2126	5300 Bishop Blvd. Cheyenne, WY 82009
Albany County Fire District #1 *Primary Fire Service Provider	Chad Dinges Fire Warden	307-760-3641 cdinges@co.albany.wy.us	1002 South Third St. Laramie, WY 82070

Agency/Corporation	Name/Role	Phone/Email	Address
Tie Siding VFD	Jon Essley Fire Chief	951-313-6096 tiesidingvfd@hotmail.com	494 Boulder Ridge Rd. Tie Siding, WY 82084
Vedauwoo VFD	Brett Wadsworth Fire Chief	307-399-4192 vvfd2013@gmail.com	44 Old Highway 30 East Laramie, WY 82070
Laramie Fire Department *Primary EMS Provider	Dan Johnson Fire Chief	307-721-5332 djohnson@cityoflaramie.org	209 S. 4th St. Laramie, WY 82070
Iverson Memorial Hospital	N/A	307-742-2141	255 N 30th St. Laramie, WY 82072

4.2 Communications

Timely and efficient communications are essential for responding to an emergency response situation. The following sections address communication requirements at the Project Area.

4.2.1 Signage

Appropriate emergency signage will be posted throughout the Project and will be placed in high visibility areas to warn employees and visitors of all potential hazards. Signs will include emergency contact information and access road names/codes to aid emergency aid workers in locating Project facilities. Access road signs will be posted at major road intersections. ConnectGen will also install appropriate signage to alert recreation visitors to the potential for increased construction traffic on access routes. Signs will be located along access roads, entrances, roadway intersections, excavation sites, O&M building, and trenches.

4.2.2 Project Radio, Landline Telephones, and Cell Phones

Communications are maintained during a major emergency using a radio system that will be available for use by onsite personnel. The Wyoming Emergency Responders (including local EMS and fire) use “WyoLink” radios, a statewide common radio communication system (Wyoming Department of Transportation 2020). The Construction or Operations Site Manager and Construction Contractor’s Safety Coordinator will have a full understanding of the protocols and warning systems deployed on the WyoLink. All hand-held radio/phones will be recharged daily, as will backup batteries.

Cellphone service in the Project Area may be unreliable or limited to specific local carriers. Site crews may need to carry or have ready access to satellite phones or have access to a landline phone to ensure that emergency calls (i.e., 9-1-1) or other critical calls can be made from the Project Area. Crews and individuals not carrying satellite phones will have two-way radio contact with those that do.

4.2.3 Helicopter Transportation

ConnectGen will have two designated helicopter landing areas, one in the western half and one in the eastern half of the Project Area. The landing areas will be located on private land and in flat open areas that are adjacent to an access road and a safe distance away from any turbines or overhead electric lines. These locations will be designated once the Construction Contractor has been selected. ConnectGen will provide the designated landing area coordinates to the appropriate emergency response personnel prior to construction. Attachment 2 of this ERP and the final Site Plan will show the landing area locations as well.

4.3 On-Site Emergency Response Requirements

4.3.1 Staffing

ConnectGen's Construction Site Manager and the Construction Contractor's Safety Coordinator will be responsible for emergency responses onsite. The Construction Contractor's Safety Coordinator will provide training to staff and implement ConnectGen's and the Construction Contractor's safety policies. The Construction Contractor's Safety Coordinator will also ensure all site specific emergency response forms are included and up to date in Attachment 3 of this ERP.

During Project operations, the Operations Site Manager will be responsible for onsite emergency responses and associated trainings.

4.3.2 Equipment

A list of emergency response equipment that will be available at the Project facility is provided below. Rescue and first aid equipment along with automated external defibrillators will be kept at the O&M building and in each service truck. All equipment will be easily accessible and clearly marked.

Chemical spills may require the assistance of an Emergency Spill Response Contractor who can quickly mobilize materials and equipment to address larger spills. The Construction or Operations Site Manager will arrange with contractors to provide emergency response services in the event of spills and releases.

4.3.2.1 Communications Equipment

The following communication equipment will be available:

- Individually issued cell phone for use by site personnel with text weather/lightning alerts
- Radios for use by crews in field
- Land line communication to O&M building
- Radio communication and weather monitoring at O&M building

4.3.2.2 Personal Protective Equipment

The following personal protective equipment will be available at the O&M building:

- Rubber boots and gloves
- Goggles
- Face shields
- Heat-resistant gloves
- Leather gloves
- 11 and 40 Cal Suits for ARC Flash
- Yellow and green fire retardant wildfire shirts and pants
- Full body harness for fall protection
- Lanyards for fall protection
- Lad-Saf systems for fall protection
- Tower rescue equipment
- Snake chaps
- Steel toe boots
- Hard hats
- Safety glasses

4.3.2.3 Other Equipment Maintained in O&M Building and in Crew Trucks

The following equipment will be available and ready for use:

- Shovels
- Rakes
- Tube absorbents
- Absorbent pads
- Absorbent material (e.g., sand, salt, or non-clumping cat litter)
- Appropriate electrical rated fire extinguishers
- First aid kits
- Flashlight with extra batteries
- Basic tool kit
- Tow rope
- Jumper cables
- Warning lights or road flares

4.3.3 Training

Training is an integral part of the emergency preparedness and response program at this Project, and it is the responsibility of the Construction or Operations Site Manager (or designated person) to ensure that all personnel (administrative or field, permanent or

temporary) are properly trained on this ERP. On commencement of construction at the Project Area, personnel non-essential to an emergency response will be trained in the safety procedures of the site during their site orientation. Part of this orientation will involve training of personnel in their role as defined in the emergency procedure. This training will be conducted again if/when the plans or employee's responsibility changes. Training provides site employees with information and guidelines to assist them in recognizing, reporting, and controlling hazards and risks. Employee training is provided at no cost to the employee and must be conducted during the employee's normal work week.

It is the responsibility of each employee to become familiar with the Project components; learn the evacuation routes, muster, and shelter areas; and to attend all safety training events. This ERP and other health and safety related information will be available to all site employees and visitors at the O&M building. Pertinent Project information will be posted per Section 4.2.1 of this ERP. This signage will ensure all employees and/or site visitors can safely respond during an emergency.

Staff who are part of the primary emergency response team will be trained to undertake their roles competently and efficiently if a major emergency occurs. Training will be given both onsite and externally dependent upon the requirements of the role and the experience of the individual involved.

Staff will only be authorized to act as a primary emergency response team member when the Construction or Operations Site Manager is satisfied that they have the necessary level of training and understanding to act in their emergency role. To remain qualified, emergency response team members will be required to complete refresher first aid training at least every 3 years.

If desired by local EMS, fire, and/or the Albany County Sheriff's department, ConnectGen will coordinate to provide regular training for local emergency response providers. Documentation of all ERP training will be maintained in Project files at the O&M building.

4.4 Emergency Evacuation

In order to be effective and efficient in emergencies, annual evacuation drills will be performed at the Project Area to familiarize employees of procedures in the event of a real emergency. The appropriate primary emergency response team(s) will be requested to participate and assist with critique of evacuation drills. A Project evacuation sheet will be posted and orally communicated to site personnel. These procedures will be discussed at periodic safety meetings, in addition to being covered during the Project's employee orientation.

4.4.1 Emergency Routes

A designated evacuation route and meeting site will be identified in the final ERP in coordination with the Construction Contractor and local emergency responders (Attachment 2). The evacuation routes will be posted within the O&M building and various other locations in plain view. When instructed, personnel will evacuate the site via the nearest access to the designated route, and assemble at the designated site. If personnel are unable to make it to the designated assembly area, they should seek shelter wherever possible and contact their supervisor for further instructions.

4.4.2 Evacuation Procedures

All personnel will act as directed by the Construction or Operations Site Manager (or designated person) and not evacuate the site unless instructed. The method of evacuation will be determined in consultation with the primary emergency response team and local emergency services.

Site personnel will evacuate in a calm and orderly fashion and will go to the primary designated assembly area identified in Attachment 2. If personnel are unable to make it to the designated assembly area, they should seek shelter wherever possible and contact their supervisor for further instructions. The Construction or Operations Site Manager (or designated person) will arrange a head count of all personnel. A log in/log out sheet will be used by all employees and visitors of the site. In the event of an emergency, a binder with these sheets is carried to muster point and used to take roll call.

5 EMERGENCY SCENARIOS

5.1 General Emergency Response Protocol

The following emergency procedures should be followed in the event of an emergency that occurs at the Project during construction, O&M, or decommissioning:

1. Stop work and preserve the scene.
2. Notify the nearest management representative (i.e., Construction or Operations Site Manager) immediately. Provide the following information:
 - a. Reporting staff name
 - b. The location of emergency by referring to the closest turbine, structure, or road junction
 - c. Name of the ill or injured person(s)
 - d. A brief description of situation, symptoms, accident and nature or type of injury/illness (i.e. heart attack, not breathing, unconscious, etc.), or minor injury (i.e. twisted ankle, minor cuts, etc.)
 - e. Potential risks of injury to persons at or near the site
3. The supervisor(s) will call 9-1-1 and then notify onsite personnel, including any visitors, of the emergency via an alarm system, by telephone, two-way radio, or sirens. The supervisor(s) will describe the emergency to the 9-1-1 Operator. For non-urgent incidents, the supervisor(s) will coordinate the transportation of the person to the hospital and notify the hospital of the incoming patient. The Western Area Power Administration will be notified for incidents involving the interconnection switchyard. The remote monitoring center will be notified for incidents regarding turbines.
4. If the appropriate supervisor(s) cannot be immediately reached, then the employee will call 9-1-1.
5. The supervisor(s) will send an employee to the nearest site access point to meet the emergency services and escort them to the location of the emergency.
6. If required to prevent further potential injury, the supervisor(s), will evacuate the Project Area where the accident occurred.
7. The supervisor(s) will continue to assist with the situation onsite, and at least one of the supervisors will accompany any injured personnel to the hospital. The supervisor will stay until examination (including a drug and alcohol test) is complete, so that a full report including the extent of the injuries can be made.

5.2 Fire/Explosion

Possible fire situations include grass fires due to lightning, failure of overhead lines, electrical situation in the turbine, and construction related accidents such as sparks from cutting operations and vehicular operation over dry vegetated areas. Personnel will be made aware of

other risks and rules during the Project orientation, which is required prior to being allowed to work onsite. In the event of a fire, site personnel should complete the general emergency response protocol of this ERP. Personnel must immediately evacuate the building or structure if inside and clear the area of all personnel. The Construction or Operations Site Manager (or designated person) will then call 9-1-1 to activate the ACFD #1 and give the location of fire. If the aforementioned supervisor(s) cannot immediately be reached, the employee will call 9-1-1.

Only personnel trained in the use of fire extinguishers should attempt to use an extinguisher. Personnel are not expected or authorized to respond to fires beyond their incipient stage and that cannot be extinguished using a handheld portable fire extinguisher. The following actions should be taken by area personnel while waiting for the local fire department:

- Clear the immediate area of personnel.
- Account for all employees, contractors, and visitors who were working in the area of the fire.
- If safe and if possible, remove any obstructions (vehicles, materials, etc.) or flammable materials in the vicinity.
- Station available personnel at road intersections to stop traffic flow.

During the winter months, the main routes from the VFDs to the Project may be inaccessible due to snow. Fire risk is decreased during the winter; however, ConnectGen will coordinate with the ACFD #1 to ensure that fire situations can be addressed year-round, potentially by storing a fire truck at the Project O&M building if necessary.

5.2.1 Electrical Fire

In the event of an electrical fire, site personnel should follow the procedures outlined in Section 5.1, above. All staff vehicles will be outfitted with appropriate electrical rated (Class “C”) fire extinguishers.

If necessary, remote control center operators can shut down turbines on demand. If a power line on a string of turbines is destroyed, individual strings of turbines will be shut down from the substation by the Construction or Operations Site Manager or a qualified electrical contractor.

5.2.2 Wildfire

The Project may be subject to impacts from wildfire. In order to limit the potential impacts of wildfire on personnel and assets, site staff will monitor the Wyoming State Forestry Division Fire Situation Report on a regular basis (<https://wsfd.wyo.gov/fire-management/fire-information-updates/current-fires>) as well as the U.S. Forest Service Wildland Fire Assessment System (<https://www.wfas.net/index.php/fire-danger-rating-fire-potential--danger-32>). If the fire class danger rating for the site is Very High or above, onsite outdoor work should be restricted, to

include no hot works, vegetation slashing, or vehicle access off gravel roads (USFS-WFAS 2020). If a wildfire or fire incident is identified in the local or immediate vicinity of the site, the Construction or Operations Site Manager will follow the protocol outlined in Section 5.1 above and coordinate with the local fire departments.

ConnectGen has developed wildfire mitigation measures that when implemented would avoid or minimize adverse effects from construction, O&M, and decommissioning of the Project. These mitigation measures will be developed in coordination with local fire departments and are provided in Table 4, below.

Table 4: Proposed Wildfire Mitigation Measures for the Rail Tie Wind Project

Resource Category	Measure	Implementation			
		Preconstruction	Construction	Operations	Decommissioning
WF-1	ConnectGen will proactively coordinate with the appropriate fire departments to minimize fire safety hazards, coordinate response efforts, schedule regular site assessments, and train all personnel in fire safety issues, such as fuel hazard reduction, maintenance techniques, and fire suppression, effectively.	X	X	X	X
WF-2	The Project's general contractor will coordinate emergency management and response and provide onsite training and certification to new site personnel during construction. During operation of the Project, the Construction or Operations Site Manager r will complete this responsibility.		X	X	X
WF-3	Maintain road widths, grades, and turnarounds consistent with county standards or similar to those outlined in the Albany County Wildland Urban Interface Mitigation Strategies. This would support emergency response team access to the site.	X	X	X	X
WF-4	The Project will develop evacuation routes and muster points in coordination with local fire departments. These maps will be maintained and distributed among site staff and local emergency response agencies. They will clearly label infrastructure locations and access roads.	X	X	X	X
WF-5	Access road signs will be posted at major road intersections to aid emergency aid workers in locating Project facilities.		X	X	X
WF-6	The Project will coordinate with the ACFD #1 to ensure that fire situations can be addressed year-round, potentially by storing water tanks onsite or a fire truck at the Project O&M building if necessary.	X			
WF-7	The Project will maintain a defensible space around Project facilities by removing hazardous fuels through either biological, chemical, and/or mechanical means. ConnectGen will keep the area clean of debris and hazardous fuels, and will reduce the amount of vegetation, both live and dead, in this defensible space to minimize the impacts of wildland fire and aid in fire suppression efforts.		X	X	X

Resource Category	Measure	Implementation			
		Preconstruction	Construction	Operations	Decommissioning
WF-8	Site staff will monitor the Wyoming State Forestry Division Fire Situation Report on a regular basis as well as the U.S. Forest Service Wildland Fire Assessment System. If the fire class danger rating for the site is Very High or above, onsite outdoor work should be restricted, to include no hot works, vegetation slashing, or vehicle access off gravel roads. If a wildfire or fire incident is identified in the local or immediate vicinity of the site, the Construction or Operations Site Manager will follow the general emergency response protocol and coordinate with the local fire departments.		X	X	X

5.3 Medical Emergency

In the event that an employee is injured, or an onsite accident has occurred, site personnel should follow the general emergency response protocol. Site personnel who are certified with appropriate first aid/CPR training may administer aid. First aid equipment along with automated external defibrillators will be kept in the O&M building and each service truck. All equipment will be easily accessible and clearly marked.

The onsite primary emergency response team will determine if first aid is not sufficient treatment for the emergency, and will contact 9-1-1 as required. The local emergency response entities will have a cross reference map identifying individual tower locations.

5.4 Chemical Release

Hazardous materials that will likely be used during construction, O&M, and decommissioning of the Project include commonly used products and material such as fuel, lubricants, solvents, oils, chemicals, and paints. These would be used for activities such as turbine pad construction, turbine O&M, painting, vehicle use, welding, building maintenance, etc. Direct impacts from hazardous materials would occur if the following were experienced from construction, O&M, or decommissioning of the Project:

- Creation of a hazard to the public or the environment through reasonably foreseeable upset and accident conditions (accidental spills from various incidents during construction and operation) involving the release of hazardous materials into the environment
- Improper disposal of waste generated by the Project that would pose a threat to public health or the environment
- Violation of federal, state, or local regulations regarding transport, use, storage, and disposal of hazardous materials
- Discovery of unanticipated environmental contamination during construction activities

Transport, use, storage, and disposal activities for hazardous materials will be necessary for all stages of the Project. These activities will require appropriate handling according to regulatory requirements. In addition, measures will be implemented to avoid inadvertent spills and prepare for the management of an inadvertent spill, should one occur. Hazardous Chemical Inventory and Safety Data Sheets will be kept onsite in the O&M building.

In the event of a chemical spill, site personnel will complete the general emergency response protocol of this ERP. Personnel must immediately evacuate the area and clear the area of all other personnel and notify the Construction or Operations Site Manager (or designated person). Only staff who have received training in hazardous spills should take action. All other staff will be solely responsible for notification, isolation of the area, and personal safety precautions.

Employees at the scene must not walk or touch spilled material or inhale fumes, smoke, and vapors.

The Construction or Operations Site Manager (or designated person) will be responsible for notifying the appropriate regulatory agencies and, if necessary, the Emergency Spill Response Contractor and/or Consultant or mutual aid groups. The incident will be documented following the direction of the Spill Prevention Control and Countermeasure Plan in the event of an oil spill. Hazardous Chemical Inventory and Safety Data Sheets should be referred to for specific response measures in the event of a release.

Following the occurrence of a spill of a reportable quantity and in compliance with facility permits, and other County and/or State requirements, an incident report will be prepared by the Construction or Operations Site Manager and provided to the appropriate individuals and agencies. Attachment 3 will include all necessary Emergency Responses Forms and Checklists.

5.5 Security Threats

It is essential that all companies consider the implications of a security threat in the workplace on the health and safety of their staff. The primary concerns are threatened sabotage, bombing attacks and the potential for chemical or biological attack. In the event that a security threat comes without warning, or in the case that an incident is subsequently found to be caused by vandalism or sabotage, the ERP will be brought into effect to mobilize the appropriate emergency services.

5.5.1 Sabotage

Anyone detecting any act or threat of any act of sabotage will immediately notify the Lead Wind Technician who will then notify the Construction or Operations Site Manager. The primary emergency response team members will be immediately notified of this information and will evaluate the situation and decide what actions to take. Following the teams review, 9-1-1 should be notified, the facility should be evaluated (if safe to do so), the site should be secured and evacuated if needed, and corrective action should be taken to reduce the risk of injury.

The Project will be more likely to experience vandalism, which ConnectGen will minimize by securing the substations and switchyard with security fencing. Normal maintenance activities by ConnectGen employees throughout the Project will provide some level of site security for the entire Project, and also help identify and report illegal or suspicious activity.

Unauthorized access to the Project Area during construction, O&M, and decommissioning would pose a potential health and safety risk to trespassing parties and could increase risk to workers. In the event a trespass on private land was detected, ConnectGen employees will notify the trespasser (if safe to do so) that they are trespassing. Supervisor(s) will coordinate

with law enforcement to determine the appropriate level of response. Permanent chain-link fencing will be installed at the substations and switchyard, at the O&M building, and in additional areas where security or theft might be a concern.

5.5.2 Bomb Threat

In the event that a bomb threat call is received, the main objective is to record every word of the threat message accurately and obtain as much information as possible from the caller. Following the receipt of a bomb threat, the staff should immediately notify the Construction or Operations Site Manager by phone. The Construction or Operations Site Manager should instruct that all radio transmissions stop from this point on until cleared by the Construction Contractor's Safety Coordinator or other competent authority. Radio transmissions can activate electronic detonating or timing devices. The Construction or Operations Site Manager or Construction Contractor's Safety Coordinator will immediately notify 9-1-1 and evacuate the facility as necessary. The Construction or Operations Site Manager or Construction Contractor's Safety Coordinator will also coordinate evacuation of any part of the surrounding community with local authorities as needed.

If during the site evaluation any suspicious item(s) are found, they are not to be touched. Barrier tape will be used to mark the area where the suspicious item(s) are by extending a continuous line of tape. This will help guide local authorities to the suspicious item(s). The Construction Contractor's Safety Coordinator will ensure that the "All Clear" message is communicated once the threat has passed or is no longer present.

5.5.3 Chemical and Biological Threat

The procedures described previously for a bomb threat should be used for a chemical or biological agent threat. In the case of a chemical or biological attack, individuals should keep their bodies covered as much as possible to avoid any skin contact with the threatened substance, and they should cover their noses and mouths to avoid inhalation.

All site personnel should be vigilant in their examination of suspicious or unsolicited deliveries or letters. These items can act as a means to spread a noxious agent. Any suspicious items should be treated as suspect and authorities should be contacted to examine the piece under controlled conditions.

5.6 Severe Weather

A variety of severe weather conditions and/or natural disasters may affect the Project, including severe thunderstorms, lightning strikes, tornadoes, and flash floods. Records of prevailing weather conditions will be kept on a daily basis and weather forecast updates will be reviewed and assessed periodically throughout the day.

5.6.1 Thunderstorms and Lightning

During the spring and summer months (May through October) thunderstorms have the potential for producing damaging winds, hail, lightning, and tornados. The Construction or Operations Site Manager (or designated person), are responsible for monitoring the area for inclement weather. The supervisor(s) will announce a temporary work interruption, site evacuation, shelter in place or other emergency action, if deemed necessary. When possible, the Project will secure all materials and equipment including crane booms, small vehicles, compressors, and other onsite machinery.

In the event of storm events that produce lightning, work will be stopped in all towers onsite. Once lightning has been observed within 50 miles of any tower, personnel up tower will prepare to evacuate. Towers will be evacuated when lightning is within 30 miles of any tower. The Lead Wind Technician, Construction or Operations Site Manager, or designated person will signal to evacuate and take shelter in vehicles or trailers. When there is no shelter, the highest object in the area should be avoided. If only isolated trees are nearby, the best protection is to crouch out in the open while minimizing contact with the ground (do not lie flat). Hilltops, open spaces, wire fences, metal clothes lines, exposed sheds, and any other aboveground electrically conductive objects should be avoided. If inside a shelter, open doors and windows, stoves, metal pipes, sinks, and plug-in electrical devices including corded phones should be avoided. If possible, computers, modems, phones, and other valuable electronic equipment should be shut down and unplugged.

If a person is struck by lightning, site personnel should follow the general emergency response protocol, promptly start artificial respiration and/or initiate first aid/CPR by qualified staff, and contact 9-1-1.

5.6.2 Tornadoes

In the event of a tornado in the Project Area or its vicinity, work will be stopped by the Construction or Operations Site Manager (or designated person). Staff should evacuate and proceed to the nearest shelter (Attachment 2). All personnel and any visitors to the site must remain at the designated shelter until accounted for by Construction or Operations Site Manager, or their designated representatives. When possible, the Project should secure all materials and equipment including crane booms small vehicles, compressors, and other onsite machinery. Staff should follow the general emergency response protocol for any injuries.

5.7 Pandemic / Infectious Illness

Respiratory viruses are highly contagious, and like influenza seasonal outbreaks, often occur in communities during the fall and winter. Influenza spreads from person to person mainly in respiratory droplets from coughs and sneezes or handling contaminated objects. Yearly immunization with the influenza vaccine is the most effective way of preventing influenza. At unpredictable intervals, a novel virus, such as the Coronavirus, appears in humans for which

there is no immunity. If the novel virus is transmitted easily from person to person and causes significant illness, this creates the setting for a pandemic, a large-scale outbreak of illness with the rapid spread from person to person and country to country. The World Health Organization is responsible for announcing a global influenza pandemic. The State of Wyoming Department of Health has the primary responsibility for public health matters within its borders, including isolation and quarantine authority. That authority is usually exercised locally by the Albany County Department of Public Health.

In order to limit the potential impacts of a pandemic and the transmission of infectious illnesses, the Construction or Operations Manager will monitor the Wyoming Department of Health infectious disease website on a regular basis (<https://health.wyo.gov/publichealth/infectious-disease-epidemiology-unit/>) as well as the Centers for Disease Control and Prevention website (<https://www.cdc.gov/>). Targeted isolation and quarantine of specific individuals as ordered by public health officials may be effective in slowing or even preventing spread of the pandemic influenza virus or other novel viruses to others during the early stages of a pandemic. The Project will adhere to applicable public health orders and response plans to protect site staff and reduce the transmission of the virus.

Due to the prolonged nature of a pandemic influenza event, the World Health Organization, the Centers for Disease Control and Prevention, and the Wyoming Department of Health have developed pandemic phases and intervals to facilitate coordinated plans such as those identified in the Wyoming Pandemic Influenza Response Plan. The following emergency response measures have been developed based on guidance from this plan.

1. Monitor current pandemic and infectious diseases in the region.
2. Inventory relevant medical supplies, facilities, and services in your area.
3. Refer to local and state public health orders and response plans.
4. Coordinate response activities with local decision makers and health agencies.
5. Implement infection control measures for staff protection. Reduce staff as appropriate.
6. Review current policies and new recommendations.

5.8 Tower Rescue

Tower rescues become necessary when there is a fall, injury, or other emergency while working in or on the tower. Staff should follow the general emergency response protocol for any injuries; however, tower rescues will be the responsibility of the designated site rescue team. The site rescue team will consist of trained onsite staff; tower rescue training can be provided to local EMS if desired. The site rescue team will meet at the tower where the emergency is located.

The Project will have the appropriate tower rescue equipment and trained personnel to support and assist the site rescue team to complete the recovery. A tower rescue kit should be taken up on every climb and one should already be up tower. Any additional tower rescue equipment will be stored in the O&M building and will be transported to the appropriate turbine in the case of an emergency incident.

6 LITERATURE CITED

- Albany County. 2020a. Albany County GIS. ACFD #1 Fire Zones. Available online at: https://473929d4-1ec9-47de-afa4-344fdc24c342.filesusr.com/ugd/627411_5d5cac2e1bbe42999046b339bd41b621.pdf. Accessed November 16, 2020.
- . 2020b. Albany County Zoning Resolution. Originally Adopted August 1, 1997. Last Amended October 6, 2020. Albany County Planning Department. Available online at: <https://www.co.albany.wy.us/DocumentCenter/View/1004/Zoning-Resolution-PDF>. Accessed November 16, 2020.
- ACFD (Albany County Fire District). 2020. Albany County Fire Zones 2020. Available online at: https://473929d4-1ec9-47de-afa4-344fdc24c342.filesusr.com/ugd/627411_784d3ad3c8ca4b89b79c6fa0cf5e5aca.pdf. Accessed November 18, 2020.
- FBI (Federal Bureau of Investigation). 2020. 2019 Crime in the United States. Tables 8, 9, 10, 78, 79, and 80. Available online at: [FBI — Crime in the U.S. 2019](#). Accessed November 18, 2020.
- Iverson Memorial Hospital. 2020. Patient Care. Available online at: <https://www.iversonhospital.org/patient-care>. Accessed November 18, 2020.
- Laramie Wyoming. 2020a. Fire. Available online at: <https://www.cityoflaramie.org/93/Fire>. Accessed November 16, 2020.
- . 2020b. Services. Available online at: <https://www.cityoflaramie.org/234/Services>. Accessed November 16, 2020.
- NICC (National Interagency Coordination Center). 2013. Western US Federal Dispatch Boundaries—Wyoming. Available online: https://www.nifc.gov/nicc/logistics/references/dispatch_boundaries.htm. Accessed December 2020.
- Rawlins Interagency Dispatch Center. 2020a. About Us. Available online at: https://gacc.nifc.gov/rmcc/dispatch_centers/r2rwc/about_us.htm. Accessed November 18, 2020.
- . 2020b. Maps—Wyoming Dispatch Boundaries. Available online at: https://gacc.nifc.gov/rmcc/dispatch_centers/r2rwc/Maps.html. Accessed November 16, 2020.

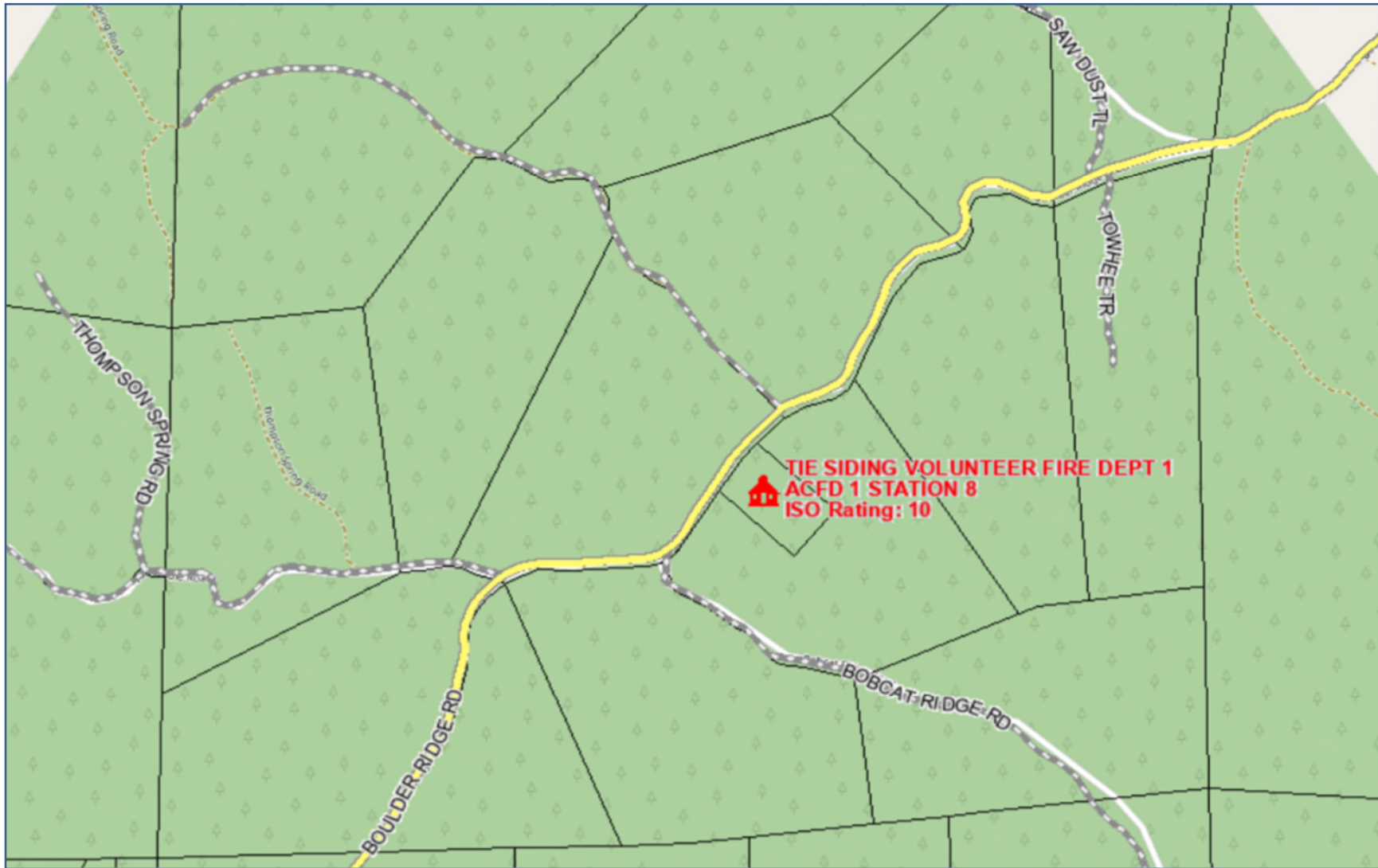
USFS-WFAS (U.S. Forest Service—Wildland Fire Assessment System). 2020. Adjective Class Rating. Available online at: <https://www.wfas.net/index.php/fire-danger-rating-fire-potential--danger-32/class-rating-fire-potential-danger-51?task=view>. Accessed November 23, 2020.

Wyoming Department of Fire Prevention and Electrical Safety. 2018. The Wyoming State Fire Service Directory. Last updated March 12, 2018. Available online at: https://drive.google.com/file/d/1vu2owt2pQQuYbTkqJth6kc_P6xYvxS9I/view. Accessed November 16, 2020

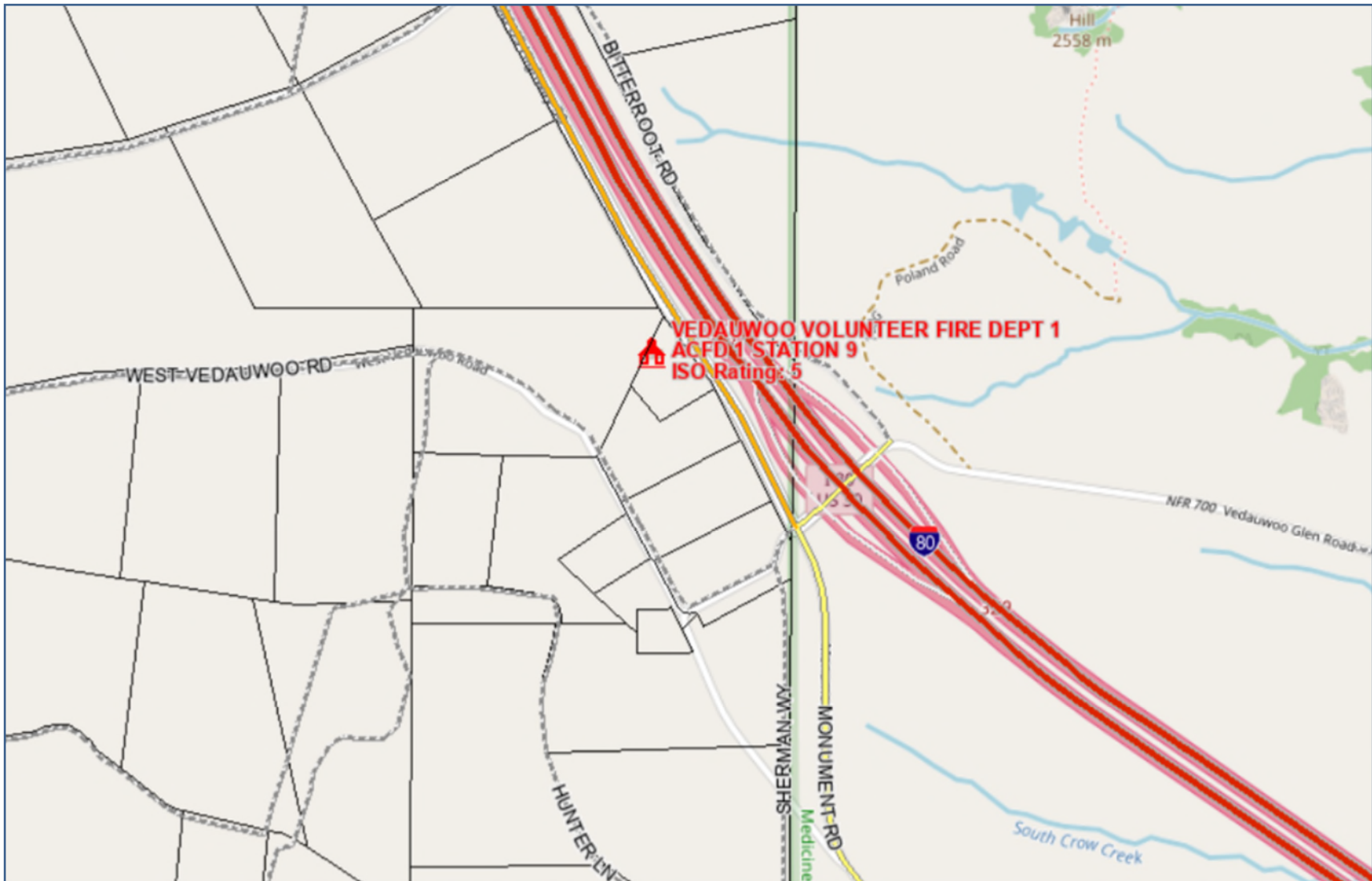
Wyoming Department of Transportation. 2020. WyoLink. Available online at: <http://www.dot.state.wy.us/home/administration/wyolink.html>. Accessed November 13, 2020.

Wyoming Homeland Security. 2020. Regional Emergency Response Teams. Available online at: <https://hls.wyo.gov/programs/rerts>. Accessed November 16, 2020.

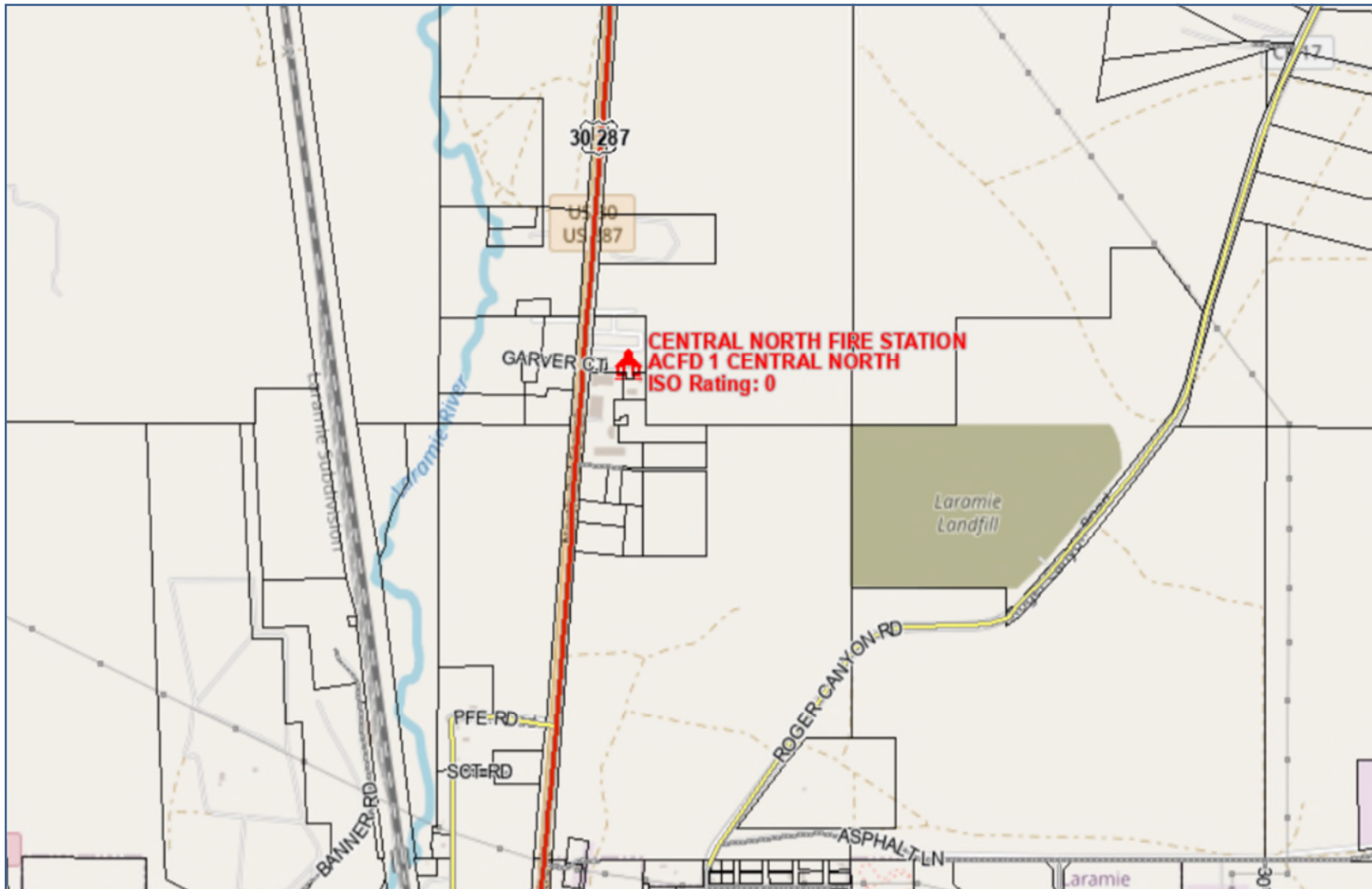
Attachment 1: Directions to Emergency Response Services



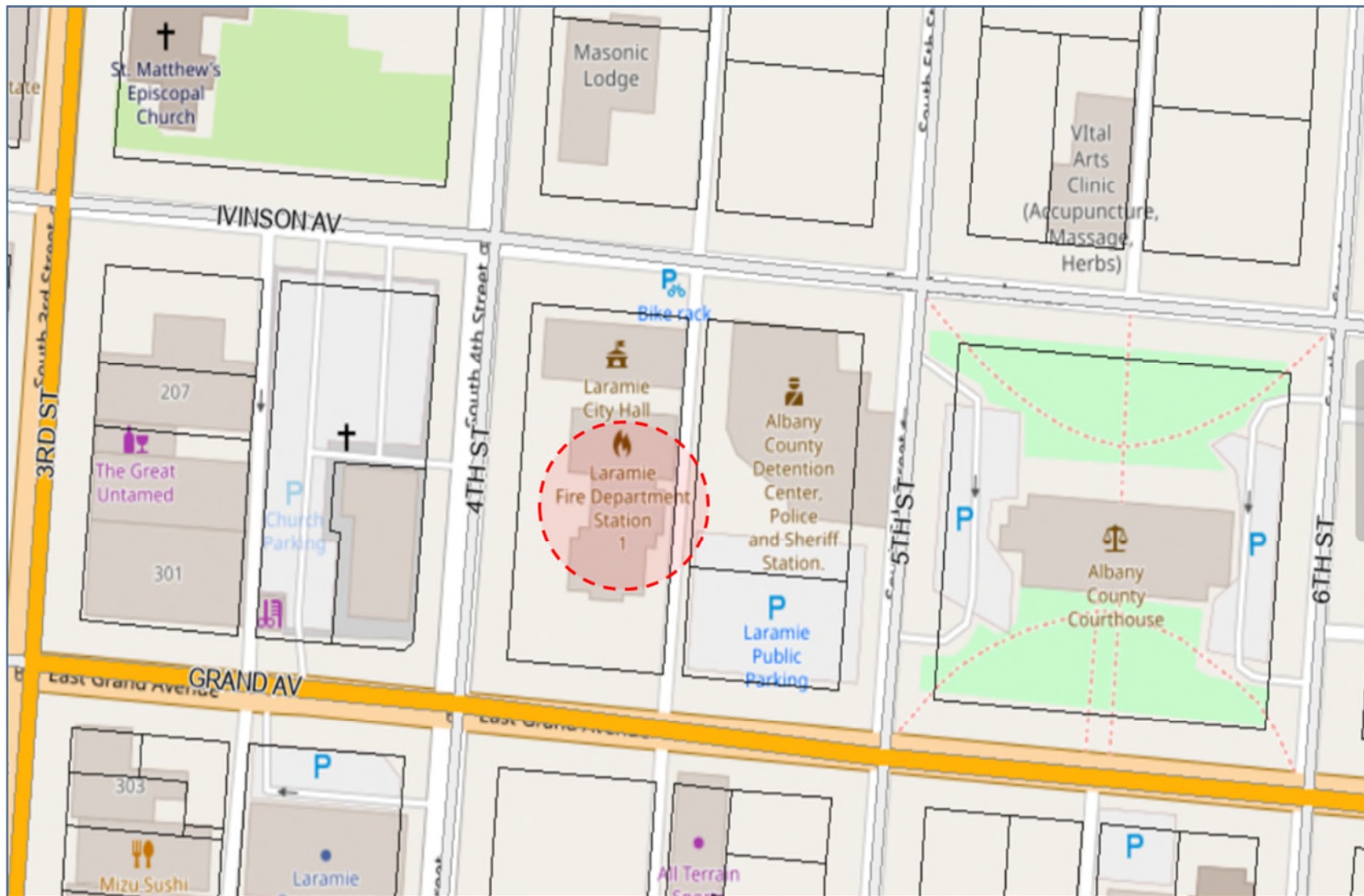
Tie Siding Volunteer Fire Department
494 Boulder Ridge Road, Tie Siding, WY 82084



Vedauwoo Volunteer Fire Department
644 Old US Hwy 30, Laramie, WY 82070

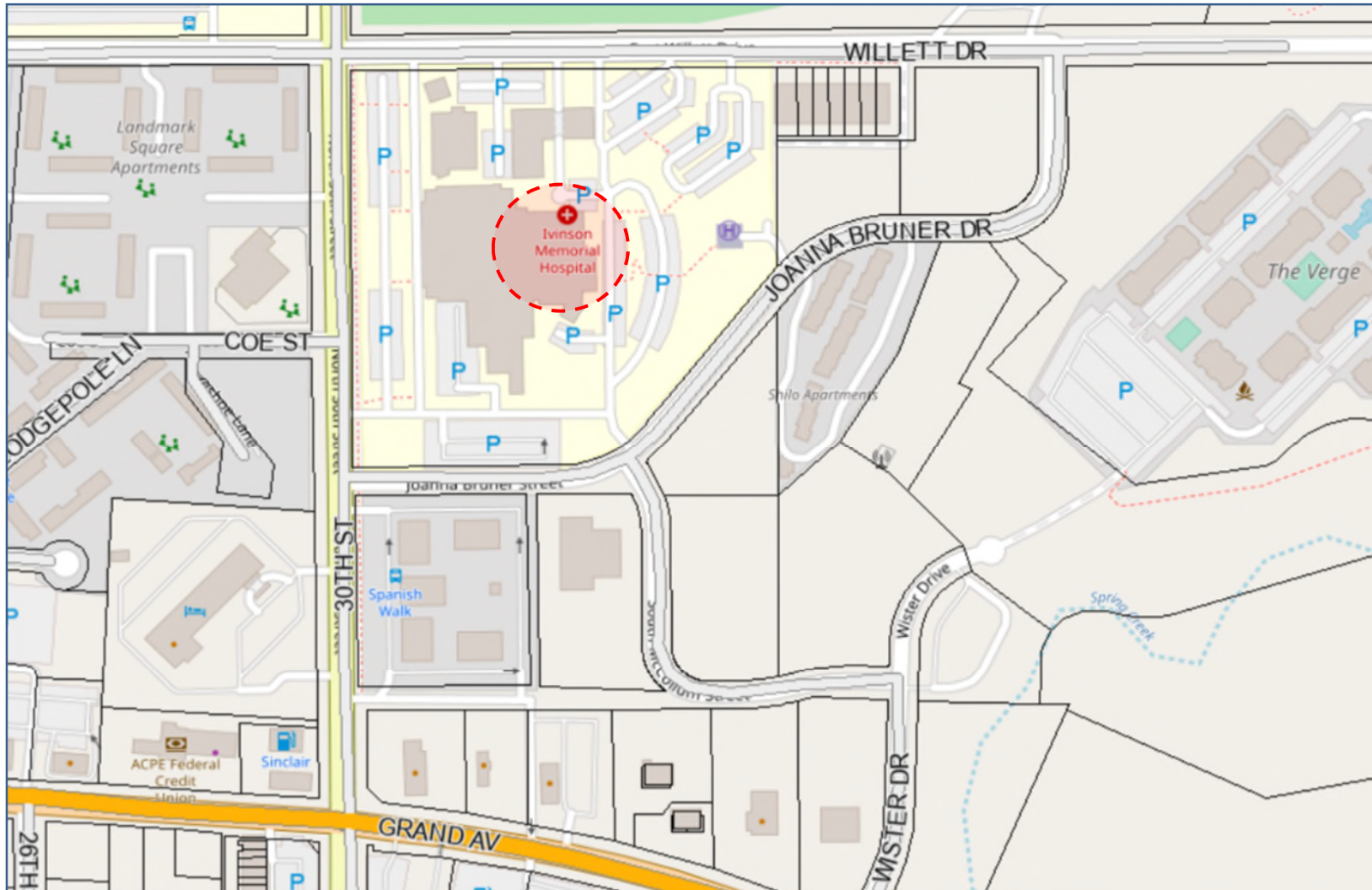


Central Volunteer Fire Department
4387 North 3rd St, Laramie, WY 82072



Laramie Fire Department

209 S 4th St, Laramie, WY 82070



Ivinson Memorial Hospital
255 N 30th St, Laramie, WY 82072

Attachment 2: Evacuation Routes and Designated Sites

Attachment 3: Emergency Response Forms and Checklists