

Rail Tie Wind Project Public Information Meeting



Connecting Power, Projects, and People

Webinar Tutorial

- The presentation will be approximately 45 minutes, with an additional 45 minutes for Q&A at the end of the presentation.
- To submit questions at any time during the presentation or Q&A session, please choose one of the following:
 - **Online:** You may type your question directly into the Question section of the panel located below the live feed
 - **Via phone:**
 - If you are currently on the line and would like to ask a question, please press *3, which will allow you to submit your question to a Broadnet agent.
 - You may also dial **(833) 946-1567** to submit your question to an agent.
- A video recording of the presentation will be available on the Project website at www.railtiewind.com
- After this meeting, you may also submit questions any time at info@railtiewind.com

Introductions

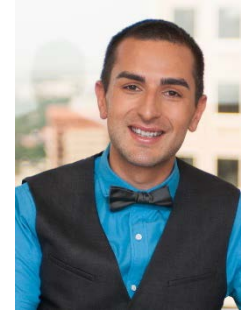
Presenters:



Amanda MacDonald
Project Manager
ConnectGen



John Kuba
Environmental Affairs
Director
ConnectGen



Josh Solis
Public Outreach
Specialist
Tetra Tech

Other Team Members Available:

Mark Lawlor, Vice President of Development, ConnectGen

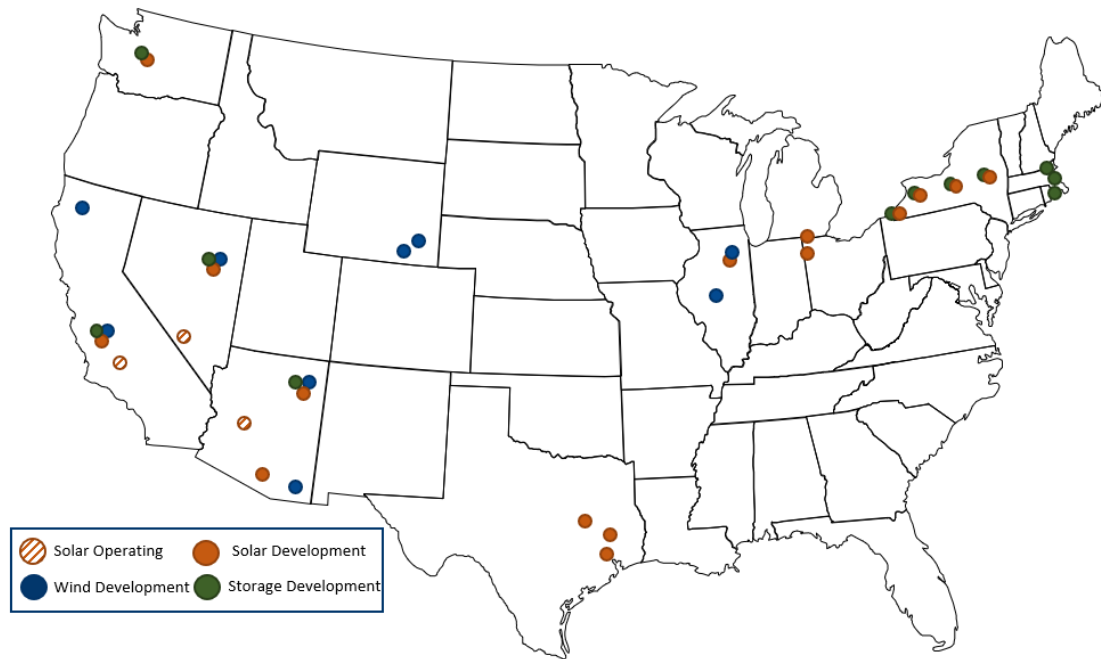
Amy Sherman, Project Manager, Tetra Tech

Joy McLain, WY ISC Application Lead, Tetra Tech

Agenda

- About ConnectGen
- Project Overview
- Overview of Regulatory Approvals
- Schedule
- Environmental Review and Impact Mitigation
 - Biological
 - Cultural
 - Visual
 - Noise
 - Transportation
- Project Economic Impacts
 - Tax revenues
 - Construction and operations workforce
- Questions

About ConnectGen



Founded in 2018, ConnectGen is an independent renewable energy company focused on the development of high-quality wind, solar, and energy storage projects across North America.

Based in Houston, Texas, our experienced team has developed, built, and operated thousands of megawatts of renewable energy projects across their careers.



ConnectGen is a subsidiary of 547 Energy, Quantum Energy Partners' clean energy platform company.



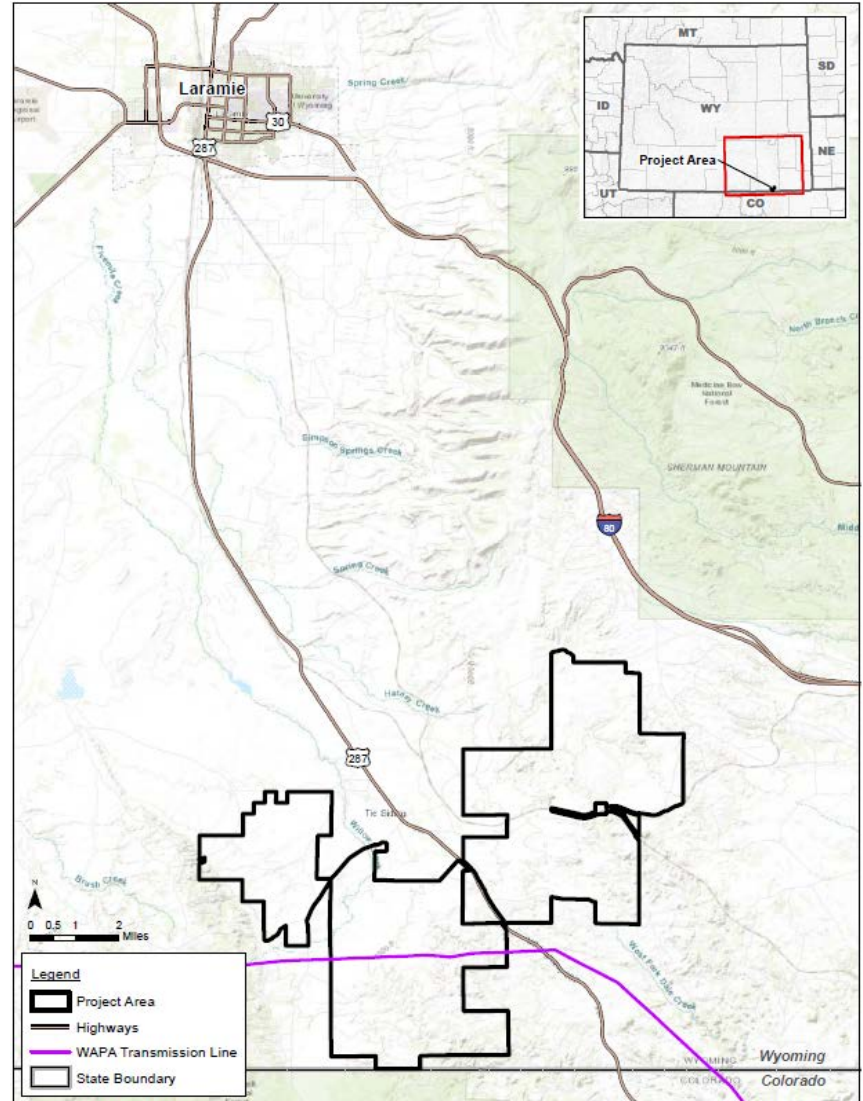
Founded in 1998, Quantum Energy Partners is a leading provider of private equity capital to the global energy industry, having managed together with its affiliates more than \$17 billion in equity commitments since inception.

Project Overview – Rail Tie Wind Project (WY)

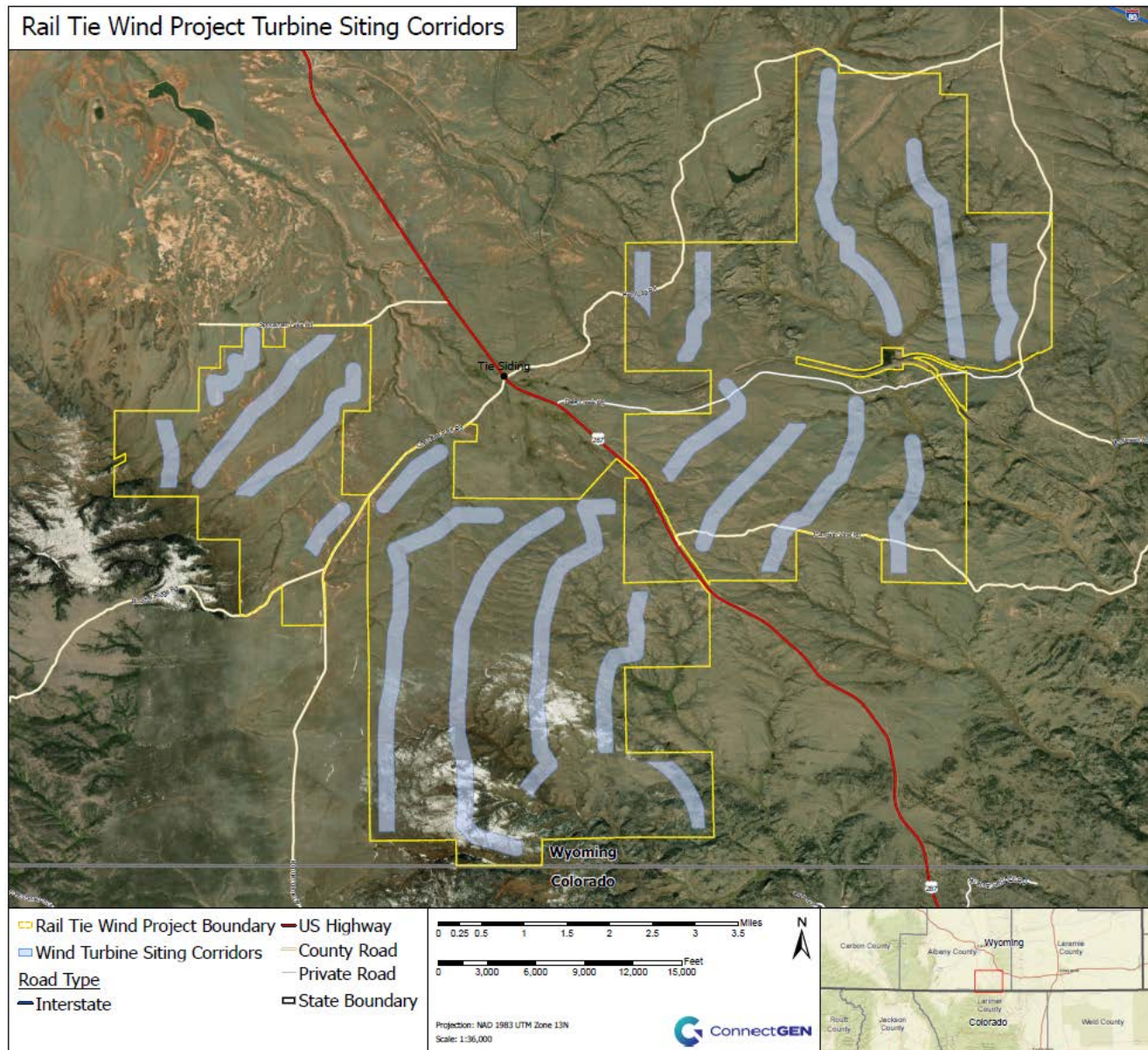
Location	Albany County, WY (41°03'50.09"N, 105°28'45.55"W)
Nearest City	Laramie (approx. 15 mi)
Commercial Operations Date	December 2022 (West Stage I) December 2023 (East Stage II)
Project Area	Approx. 26,000 acres (80% private, 20% state)
Project Size	504 MW
Point of Interconnection	Tap on Ault-Craig 345 kV transmission line

Project Highlights

- Robust wind resource (10 m/s @ 100m hub height)
- Interconnection location does not require construction of lengthy gen-tie or significant upgrades
- Avoids highly sensitive environmental areas in WY
- WAPA preparing an Environmental Impact Statement

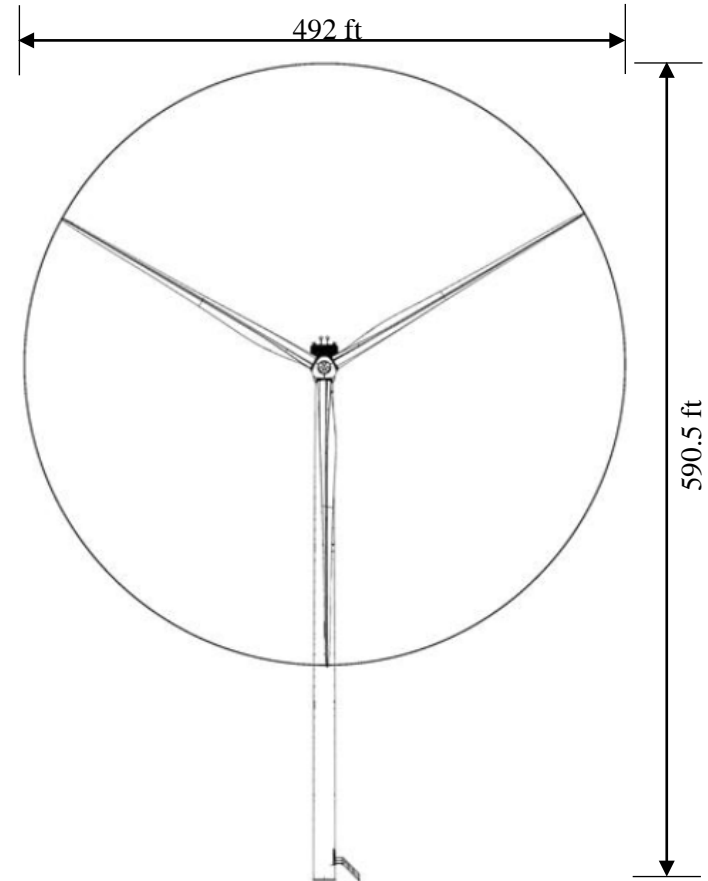


Project Siting Corridors

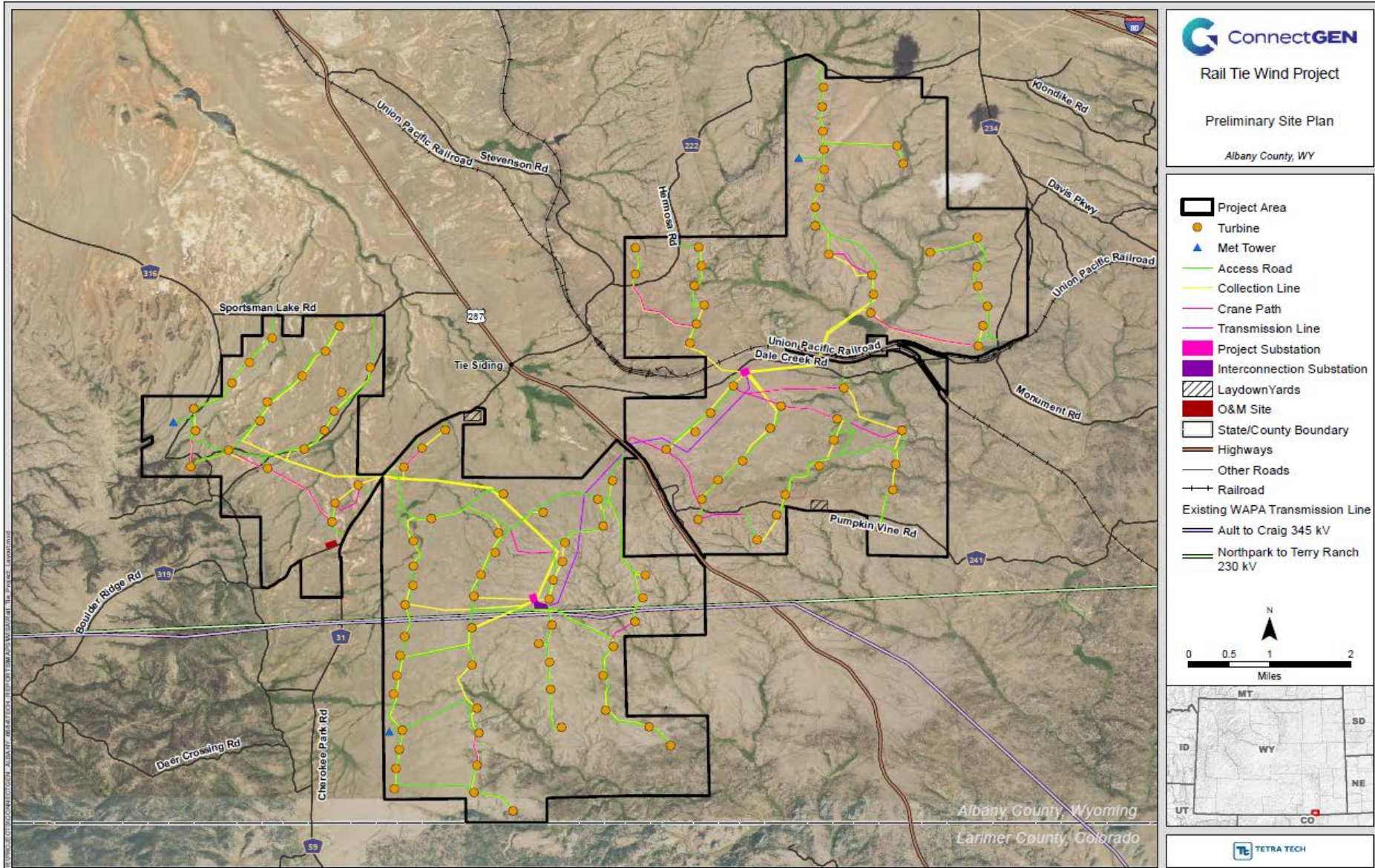


Project Components

Wind turbine generators (Vestas V150-4.2)	Count: 120 turbines Capacity: 4.2 megawatts each Overall height: 590.5 ft Hub height: 344.5 ft Blade length: 246 ft
Access roads	52 miles new/improved gravel roads
Electrical collection and communications lines	72 miles of low voltage (34.5 kV) lines
Operation & Maintenance facility	O&M building located on 5-acre graveled lot
Project substations	East and West substations, 5 acres each
Interconnection switchyard	8-acre switchyard adjacent to WAPA tx line
Gen-tie transmission line	4-mile new 345 kV tx line to connect East substation to Interconnection switchyard
Meteorological equipment	3 permanent met towers, 100 m tall



Project Layout (Vestas V150-4.2 MW turbine)



Major Environmental Review and Regulatory Approvals

Federal NEPA Review:

- Triggered by ConnectGen's interconnection request to transmission line owned by Western Area Power Administration (WAPA), a federal entity
- WAPA preparing Environmental Impact Statement (EIS) in accordance with National Environmental Policy Act (NEPA) and other applicable regulations
- EIS will disclose impacts of proposed project on surrounding environment

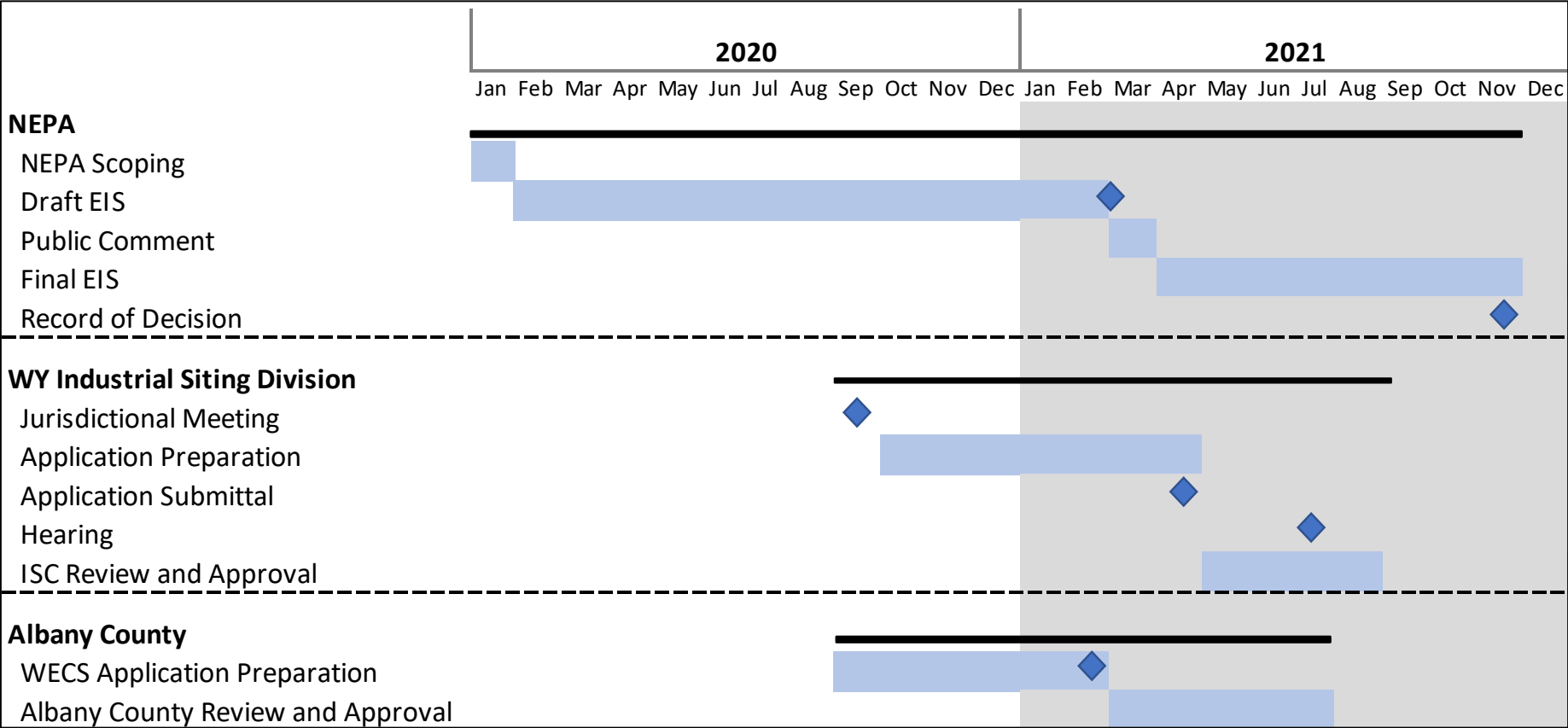
Wyoming Industrial Siting Council review:

- WY Dept of Env Quality (WDEQ) Industrial Siting Division implements the WY Industrial Development Information and Siting Act
- Applies to wind projects with greater than 30 turbines and/or construction cost exceeding \$222.8 million
- Consolidates the review of 19 independent state agencies into comprehensive permitting process

Albany County review:

- Wind Energy Conversion System (WECS) Use Permit required for wind projects with aggregate generating capacity greater than 25 kW
- Review and recommendation by Planning and Zoning Commission
- Review and approval by Board of County Commissioners

Schedule of Major Regulatory Approvals



Anticipated Construction Schedule

Project consists of two separate stages, each approximately 252 MW. Anticipated that first 252 MW West stage will be completed and fully operational by the end of 2022, and the second East stage operational in 2023.

Project Component	2022												2023											
	Feb	Mar	Apr	May	Jun	Jul	Aug	Sep	Oct	Nov	Dec	Jan	Feb	Mar	Apr	May	Jun	Jul	Aug	Sep	Oct	Nov	Dec	
	RAIL TIE WEST												RAIL TIE EAST											
Roads																								
Crane Pads																								
Foundations																								
Collection																								
Wind Turbine Erection																								
Wind Turbine Commissioning																								
Substation																								
Gen-Tie Transmission Line																								
Restoration																								

Environmental Review

ConnectGen gathered information about Project Area resources through an iterative study process including:

- Database review
- Desktop analysis
- Agency/eNGO outreach
- Field surveys

ConnectGen performed a comprehensive review of potential direct and indirect impacts associated with various environmental resources in order to inform Project siting and design, and support permitting. Focus resources include:

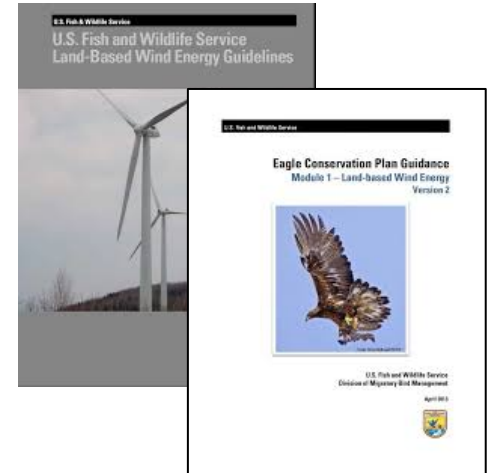
- Air Quality
- Health and Safety
- Shadow Flicker
- Aquatic Resources
- Land Use
- Socioeconomic
- Cultural Resources
- Noise
- Transportation
- Geology and Soils
- Paleontological Resources
- Visual
- Hazardous Materials
- Biological Resources

Additional studies and consultations will occur prior to construction, during construction, as well once the project is operational.

Biological (Wildlife)

ConnectGen is applying agency guidance to study and reduce wind development impacts on wildlife and their habitats:

- Land-Based Wind Energy Guidelines
- Eagle Conservation Plan Guidance
- Wildlife Protection Recommendations for Wind Energy Development in Wyoming



Wildlife surveys completed to determine existing species populations and habitats:

- Small and Large Avian Use Point Count surveys (Jan 2019 – Dec 2020)
- Eagle and Raptor Aerial Nest surveys (Jan 2019 – Dec 2020)
- Bat Passive Acoustic Monitoring surveys (April – Oct 2019)
- Project Area Habitat Assessment (Sept 2019)
- Preble's Meadow Jumping Mouse Habitat Suitability Assessment (May 2020)
- Burrowing Owl Presence/Absence surveys (May – July 2020)
- Swift Fox Presence/Absence surveys (Sept 2020)

Cultural

Cultural resource studies performed to identify resources within and adjacent to the Project:

- Agency outreach and database review of previously recorded cultural resources
- Outreach to Native American tribes to identify known resources
- Visual Analysis of National Register of Historic Places (NRHP) properties within 10-miles of Project
- Class III pedestrian surveys to be completed prior to construction to identify any previously unrecorded resources

Section 106 process

WAPA is leading a formal cultural resource review and consultation pursuant to Section 106 of National Historic Preservation Act. Section 106 requires federal agencies to consider the effects of proposed actions on NRHP-eligible properties

- Involves consultation with State Historic Preservation Office (SHPO), interested parties, and interested Native American tribes
- Potential effects to cultural resources are assessed, and measures are identified to avoid, minimize or mitigate adverse effects to historic properties

Visual

Visual simulations for maximum height (675 ft) and minimum height (500 ft) turbine scenarios created for Key Observation Points (locations with increased viewer sensitivity):

- Tie Siding
- The Buttes
- Ames Monument
- Cherokee Park Road and Fish Creek Road
- Mortenson Lake National Wildlife Refuge
- Interstate 80
- Snowy Range Road / Big Hollow Road



Ames Monument: Maximum turbine height scenario

Nighttime Lighting

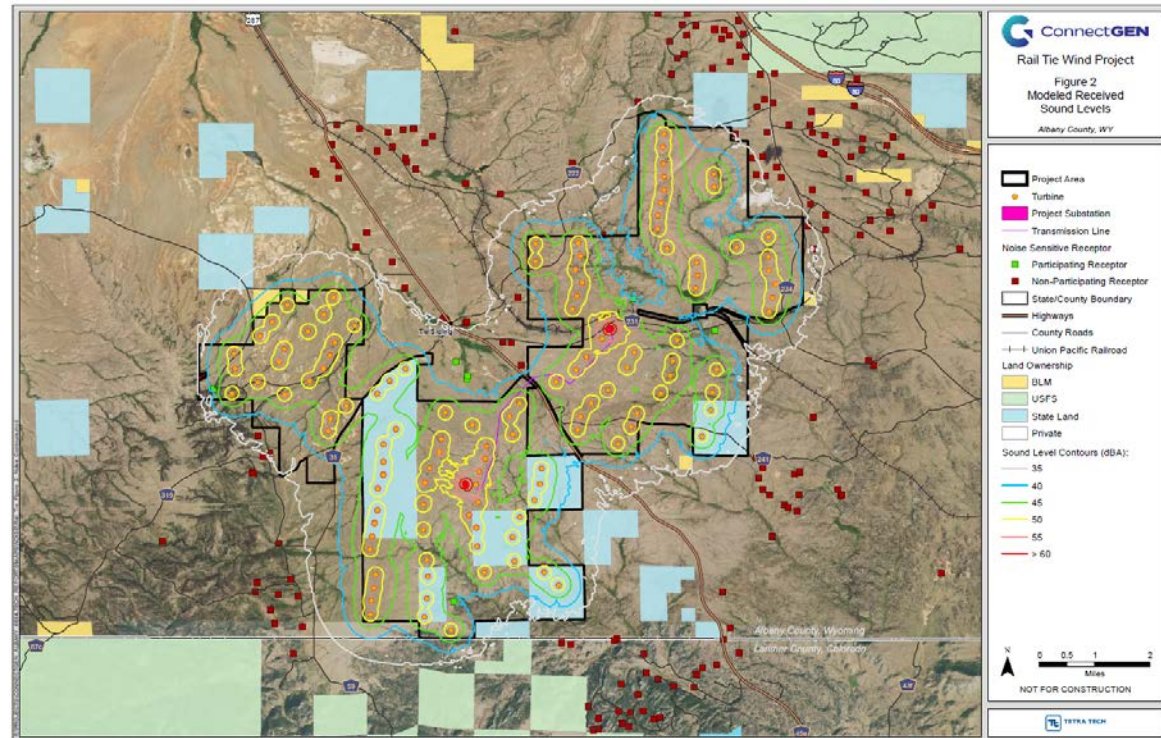
- Visual Impacts of nighttime turbine lighting can be minimized through use of Aircraft Detection Lighting System (ADLS), which limits illumination to only when there is aircraft activity in the area.
- ConnectGen will apply to Federal Aviation Administration for use of ADLS at the Project.

Sound

Albany County Commercial Wind Energy Siting Regulations: *Sound associated with WECS operations shall not exceed fifty-five (55 dBA) as measured at any point along the common property lines between a non-participating and a participating landowner.*

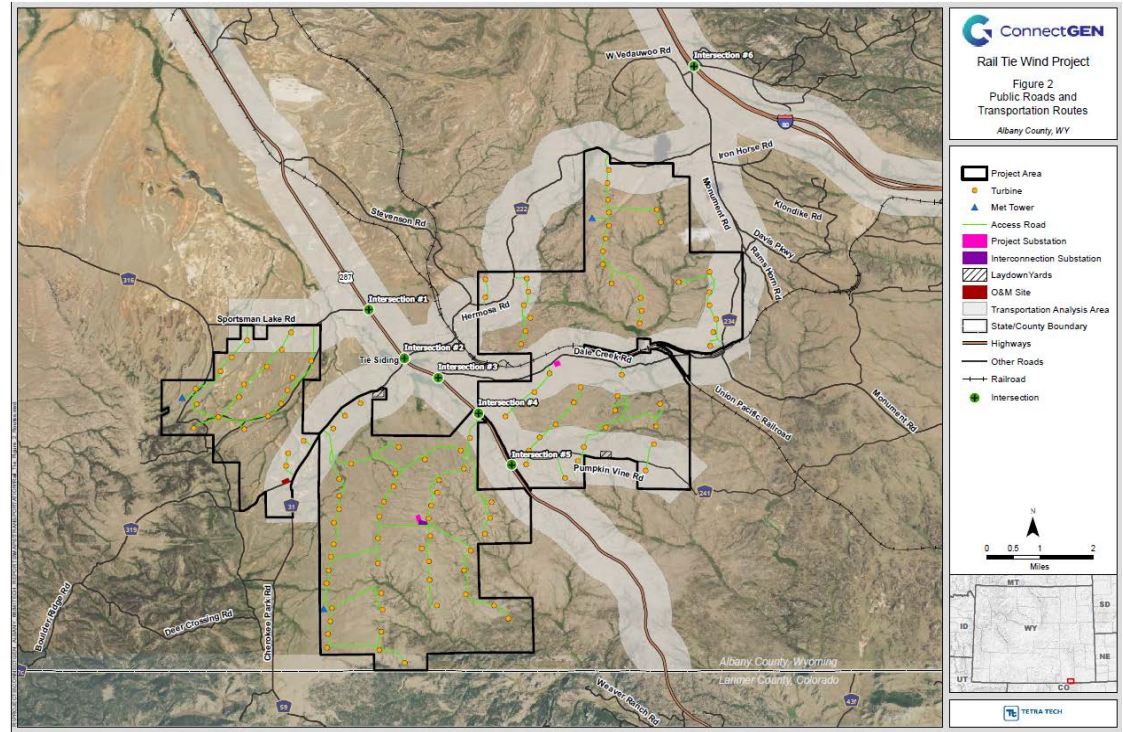
Acoustical Assessment modeled noise impacts from wind turbines and substations:

- Sound level does not exceed 55 dBA noise limit at any common property lines
- No Noise Sensitive Areas would experience operational Project Sound greater than expected existing ambient noise (45 – 53 dBA)



Transportation

- Project construction traffic modeled to understand impacts on highways and county roads
- Materials will be transported to the Project via rail (offloaded in Laramie) or truck (via I-25, I-80, or U.S. 287)
- Construction workers are anticipated to commute from Laramie



Road Use Requirements:

- WYDOT Road Use Agreement
- Albany County Road Use and Maintenance Agreement

EPMs and Project Plans

Environmental Protection Measures and Project Plans cover all resource categories and through implementation would avoid, minimize and mitigate Project impacts.

Biological

- Bird and Bat Conservation Strategy
- Eagle Conservation Plan
- Weed Management Plan
- Wind Energy Monitoring Plan

Transportation

- Transportation and Traffic Management Plans
- Public Road Use Plans

Safety and Environment

- Health, Safety, Security, and Environment (HSSE) Plan
- Emergency Management Plan
- Lighting Plan
- Waste Management Plan

Cultural

- Historic Properties Treatment Plan
- Unanticipated Discoveries Plan

Aquatic Resources

- Spill Prevention, Control, and Countermeasure (SPCC) Plan
- Stormwater Pollution Prevention Plan (SWPPP)

Air Quality

- Fugitive Dust Control Plan

Geology and Soils

- Erosion Control Plan
- Blasting Plan

Decommissioning

- Decommissioning and Reclamation Plan

Tax Revenues

Rail Tie Wind Project Tax Revenues Paid to County and State:

	Sales & Use Tax (Construction, One-Time)	Sales & Use Tax (Operations, Avg Annual)	Excise Tax on Wind Generation (Annual)	Property Tax (Avg Annual)	Total Tax Revenues over 35 Year Project Life
State of Wyoming	\$12.4 million	\$0.2 million	\$0.8 million	-	\$45.0 million
Albany County	\$14.6 million	\$0.3 million	\$1.2 million	\$1.94 million	\$131 million
Total	\$27 million	\$0.5 million	\$2.0 million	\$1.94 million	\$176 million

ConnectGen would pay **\$27 million** in taxes during construction, of which **\$14.6 million** would go to Albany County.

Additionally, during operations ConnectGen would pay a steady stream of annual tax revenues, averaging **\$4.2 million** each year, of which **\$3.3 million** would be paid to Albany County each year.

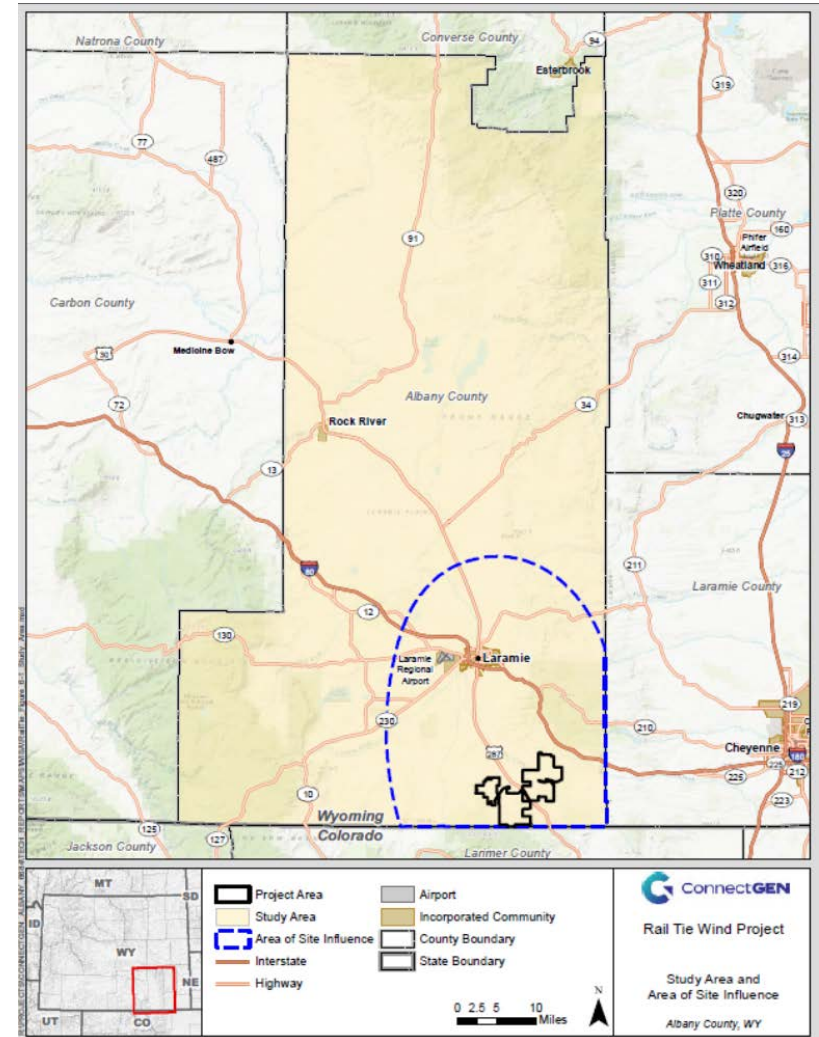
Construction and Operations Workforce

Construction

- During construction, the Project would employ an estimated **average of 120 workers** over the 20-month construction period, with a peak of 195 workers in July 2023.
- Housing: Demand for housing from non-local workers can be met by existing housing resources (hotels and motels, rental housing, etc) that would otherwise be vacant.
- Impact Assistance Funds: Up to \$13.5M could be available for distribution to affected local governments by ISC.

Operations

- Estimated permanent, full-time employment for **23 workers** residing in Albany County.



Study Area and Area of Site Influence

Milestone Dates

Q1 2021 (January - March)

- Publication of Draft Environmental Impact Statement and Public Hearing
- Submittal of County application

Q2 2021 (April - June)

- Planning and Zoning Commission Review and Meeting
- Board of County Commissioners Review and Hearing
- Submittal of State application
- Industrial Siting Council Review/ State Agency Review

Q3 2021 (July-September)

- Industrial Siting Council Hearing
- Board of County Commissioners Approval
- Industrial Siting Council Approval
- Publication of Final Environmental Impact Statement EIS

Q4 2021 (October-December)

- WAPA Record of Decision

2022-2023: Construction



Questions?

Welcome to the Q&A portion of the meeting. The audience is in listen-only mode. The moderator will read submitted questions and Rail Tie Wind Project team members will respond.

To submit questions through the computer, submit them through the Question form underneath the presentation.

A screenshot of a web form titled "Ask a Question" with a dropdown arrow. The form has two input fields: "Name: (change)" and "Question:". Below the "Question:" field is a "Submit Question" button.

To submit question by phone, press *3 if currently on the line, or call 833-946-1567

- You will be added to the queue to submit your question to an agent
- Callers will be queued in a first come, first served basis

If you have additional questions after this meeting, the Rail Tie Wind Project team can be contacted at:

(888) 910-9717

info@raltiewind.com



www.connectgenllc.com